

LOC/DME I-LUC <b>109.15</b> Chan <b>28(Y)</b>	APP CRS <b>240°</b>	Rwy Ldg <b>5500</b> TDZE <b>545</b> Apt Elev <b>547</b>
---	------------------------	---

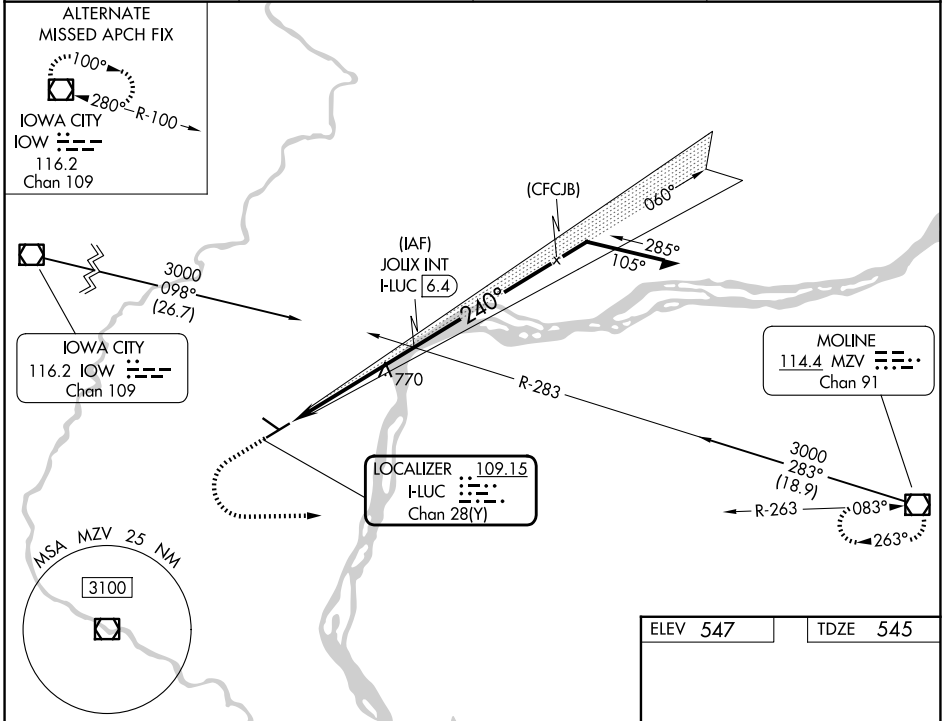
# ILS or LOC RWY 24

MUSCATINE MUNI (MUT)

**NA** VDP NA with Iowa City altimeter setting. When local altimeter setting not received, use Iowa City altimeter setting; increase DA to 825 feet; increase all MDA 80 feet and S-LOC 24 Cat C/D visibility  $\frac{3}{8}$  SM and Circling Cat C visibility  $\frac{1}{4}$  SM. For inop ALS when using Iowa City altimeter setting, increase S-ILS 24 visibility to 1 SM all Cats, and S-LOC 24 Cat C/D visibility to  $\frac{1}{4}$  SM.

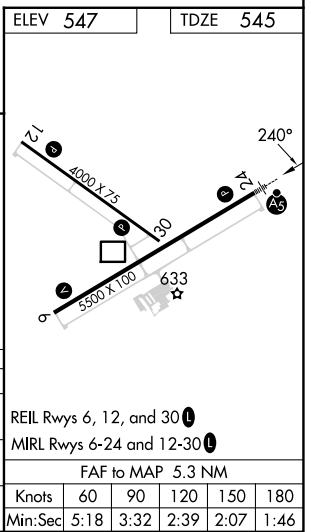
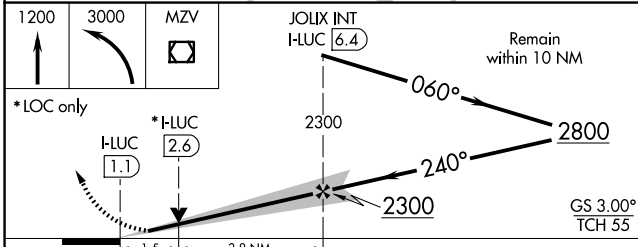
**MALSR** MISSED APPROACH: Climb to 1200 then climbing left turn to 3000 direct MZV VOR/DME and hold.

AWOS-3P <b>120.625</b>	QUAD CITY APP CON * <b>133.275 257.8</b>	CLNC DEL <b>119.125</b>	UNICOM <b>122.7 (CTAF) 0</b>
---------------------------	---	----------------------------	---------------------------------



NC-3, 11 JUN 2026 to 09 JUL 2026

NC-3, 11 JUN 2026 to 09 JUL 2026



CATEGORY	A	B	C	D
S-ILS 24	745- $\frac{1}{2}$ 200 (200- $\frac{1}{2}$ )			
S-LOC 24	1080- $\frac{1}{2}$	535 (600- $\frac{1}{2}$ )	1080-1	535 (600-1)
CIRCLING	1080-1 533 (600-1)	1200-1 653 (700-1)	1200-1 $\frac{3}{4}$ 653 (700-1 $\frac{3}{4}$ )	1500-3 953 (1000-3)

REIL Rwys 6, 12, and 30 0  
MIRL Rwys 6-24 and 12-30 0  
FAF to MAP 5.3 NM

Knots	60	90	120	150	180
Min:Sec	5:18	3:32	2:39	2:07	1:46