

WAAS CH <b>93532</b> <b>W17A</b>	APP CRS <b>166°</b>	Rwy Ldg TDZE Apt Elev	<b>5318</b> <b>4734</b> <b>4734</b>
--	------------------------	-----------------------------	---

# RNAV (GPS) RWY 17

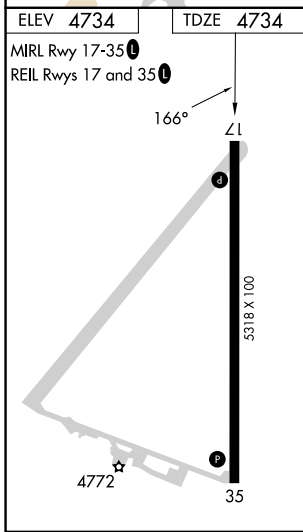
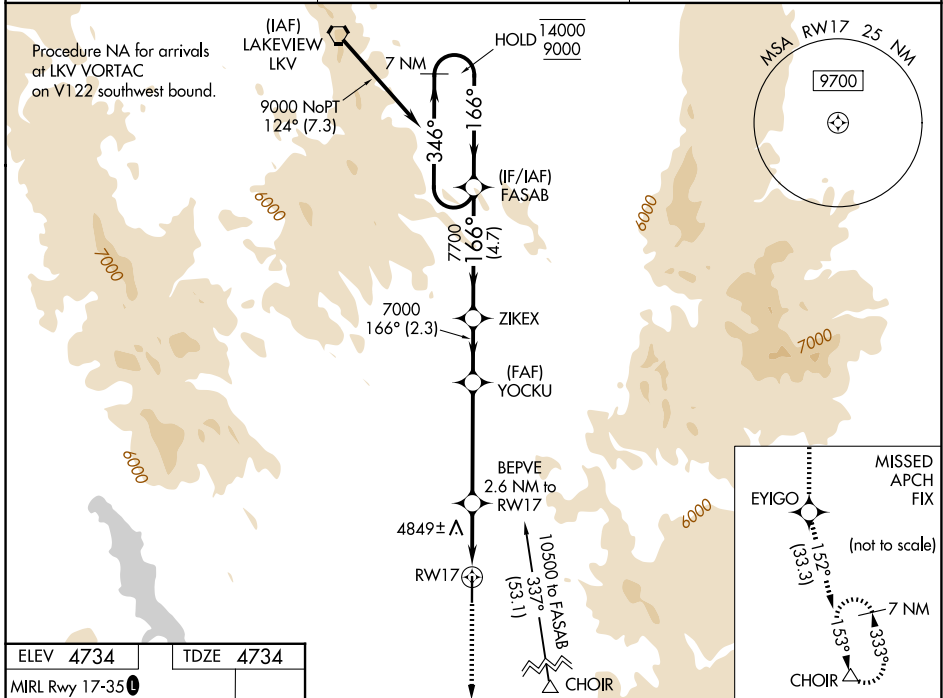
LAKE COUNTY (LKV)

RNP APCH.

**⚠** Circling NA east of Rwy 17-35. For uncompensated Baro-VNAV systems, LNAV/VNAV NA below +24°C or above 50°C.  
**⚠** -26°C

MISSED APPROACH: Climb to 11000 direct EYIGO and on track 152° to CHOIR and hold.

AWOS-3PT <b>135.525</b>	SEATTLE CENTER <b>127.6 346.35</b>	UNICOM <b>122.8 (CTAF) 0</b>
----------------------------	---------------------------------------	---------------------------------



11000	EYIGO	tr 152°	CHOIR	FASAB	7 NM Holding Pattern
*LNAV only.	BEPVE 2.6 NM to RWY 17	YOCKU 7000	ZIKEX	346° → 14000 9000	← 166°
*1 NM to RWY 17	5620*	7000	7700	GP 3.00° TCH 45	
1 NM	1.6 NM	4.3 NM	2.3 NM	4.7 NM	
CATEGORY	A	B	C	D	
LPV DA	4984-1 250 (300-1)				
LNAV/VNAV DA	5139-1½ 405 (500-1½)				
LNAV MDA	5100-1 366 (400-1)				
CIRCLING	5160-1 426 (500-1)	5220-1 486 (500-1)	5460-2 726 (800-2)	5500-2½ 766 (800-2½)	

NW-1, 11 JUN 2026 to 09 JUL 2026

NW-1, 11 JUN 2026 to 09 JUL 2026