

LOC I-RUQ 109.95	APP CRS 202°	Rwy Ldg TDZE Apt Elev	5501 772 772
----------------------------	------------------------	-----------------------------	---

ILS or LOC RWY 20

MID-CAROLINA RGNL (RUQ)

NA ADF required. When local altimeter setting not received, use Lexington altimeter setting and increase all DA 37 feet and all MDA 40 feet; increase S-LOC Cats C/D visibility 1/8 SM and Circling Cat D visibility 1/4 SM. For inop ALS when using Lexington altimeter setting, increase S-LOC 20 Cats C and D visibility to 1 1/4 mile.

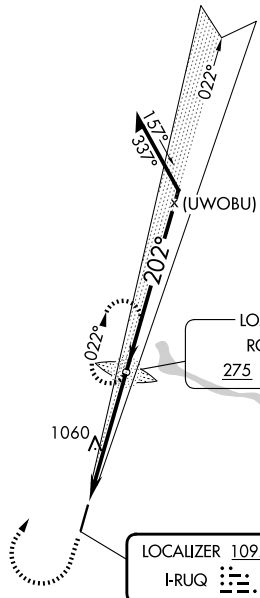
MALSR MISSED APPROACH: Climb to 1600 then climbing right turn to 2900 direct ROVDY LOM and hold.

AWOS-3P 118.175	CHARLOTTE APP CON 128.325 307.8	UNICOM 122.725 (CTAF) 0
---------------------------	---	-----------------------------------

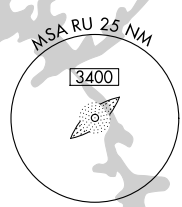
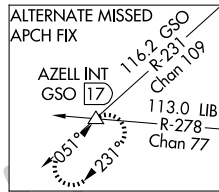
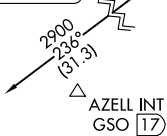
ADF REQUIRED

BARRETT'S MOUNTAIN
113.75 BZM
Chan 84(Y)

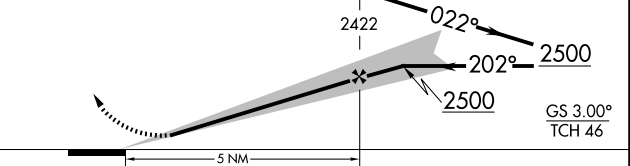
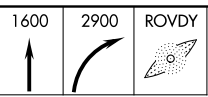
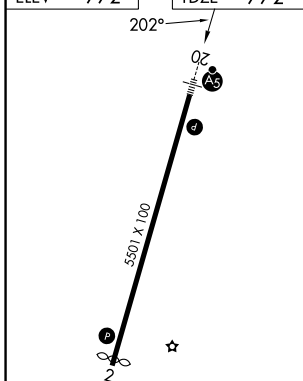
MOPED CLT [22.9]
3400
108°
(37.5)



GREENSBORO
116.2 GSO
Chan 109



ELEV 772	TDZE 772
----------	----------



CATEGORY	A	B	C	D
S-ILS 20		972-1/2	200 (200-1/2)	
S-LOC 20	1360-1/2	588 (600-1/2)	1360-1/4	588 (600-1/4)
CIRCLING	1360-1	588 (600-1)	1440-1 3/4 668 (700-1 3/4)	1440-2 668 (700-2)

MIRL Rwy 2-20
REIL Rwys 2 and 20

FAF to MAP 5 NM

Knots	60	90	120	150	180
Min:Sec	5:00	3:20	2:30	2:00	1:40

SE-2, 11 JUN 2026 to 09 JUL 2026

SE-2, 11 JUN 2026 to 09 JUL 2026