

PRYOR, OKLAHOMA

AL-5550 (FAA)

26078

WAAS CH <b>93938</b> <b>W18A</b>	APP CRS <b>178°</b>	Rwy Ldg TDZE <b>622</b> Apt Elev <b>622</b>
--	------------------------	---

# RNAV (GPS) RWY 18

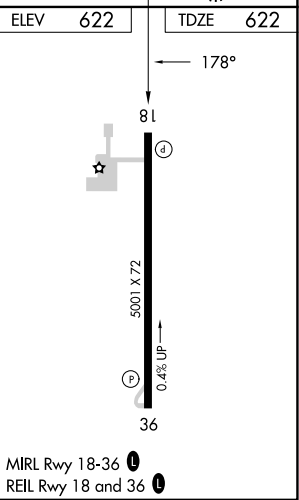
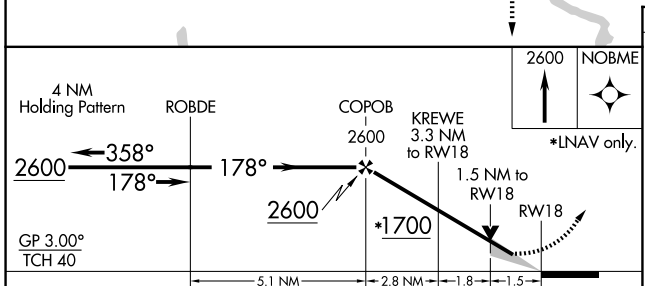
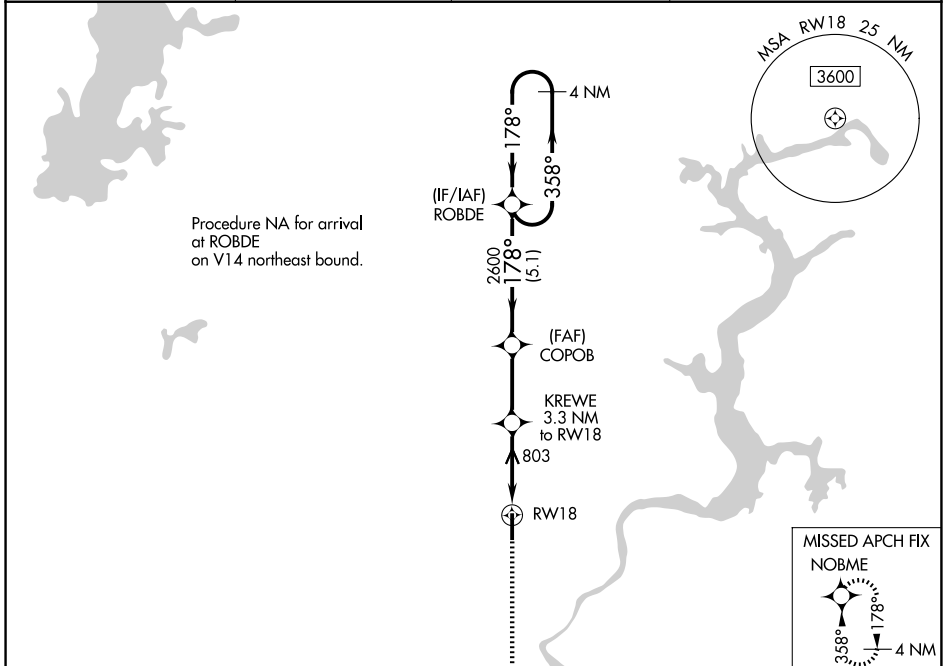
MID-AMERICA INDUSTRIAL (H71)

RNP APCH - GPS.

**NA** Circling Rwy 36 NA at night. For uncompensated Baro-VNAV systems, LNAV/VNAV NA below -1.6°C or above 54°C.

MISSED APPROACH: Climb to 2600 direct NOBME and hold.

AWOS 3-PT <b>120.1</b>	TUL ASOS <b>124.9 377.2</b>	TULSA APP CON <b>119.1 360.825</b>	UNICOM <b>122.8 (CTAF)</b>
---------------------------	--------------------------------	---------------------------------------	-------------------------------



CATEGORY	A	B	C	D
LPV DA	943-1 $\frac{1}{8}$	321 (400-1 $\frac{1}{8}$ )		NA
LNAV/VNAV DA	1108-1 $\frac{5}{8}$	486 (500-1 $\frac{5}{8}$ )		NA
LNAV MDA	1140-1	518 (600-1)	1140-1 $\frac{3}{8}$ 518 (600-1 $\frac{3}{8}$ )	NA
CIRCLING	1200-1	578 (600-1)	1560-2 $\frac{3}{4}$ 938 (1000-2 $\frac{3}{4}$ )	NA

PRYOR, OKLAHOMA  
Orig-A 14JUL22

36°14'N-95°20'W

# RNAV (GPS) RWY 18

SC-1, 11 JUN 2026 to 09 JUL 2026

SC-1, 11 JUN 2026 to 09 JUL 2026