

WAAS CH <b>78321</b> <b>W05A</b>	APP CRS <b>053°</b>	Rwy Ldg <b>5718</b> TDZE <b>1313</b> Apt Elev <b>1313</b>
--	------------------------	---

# RNAV (GPS) RWY 5

MOORE-MURRELL (MOR)

RNP APCH - GPS.

**V** VDP NA when using TYS altimeter setting. When local altimeter setting not received, use TYS altimeter setting and increase all MDAs 140 feet, increase LP and LNAV Cats C/D visibility  $\frac{3}{8}$  SM, increase Circling Cat B and C visibility  $\frac{1}{2}$  SM.

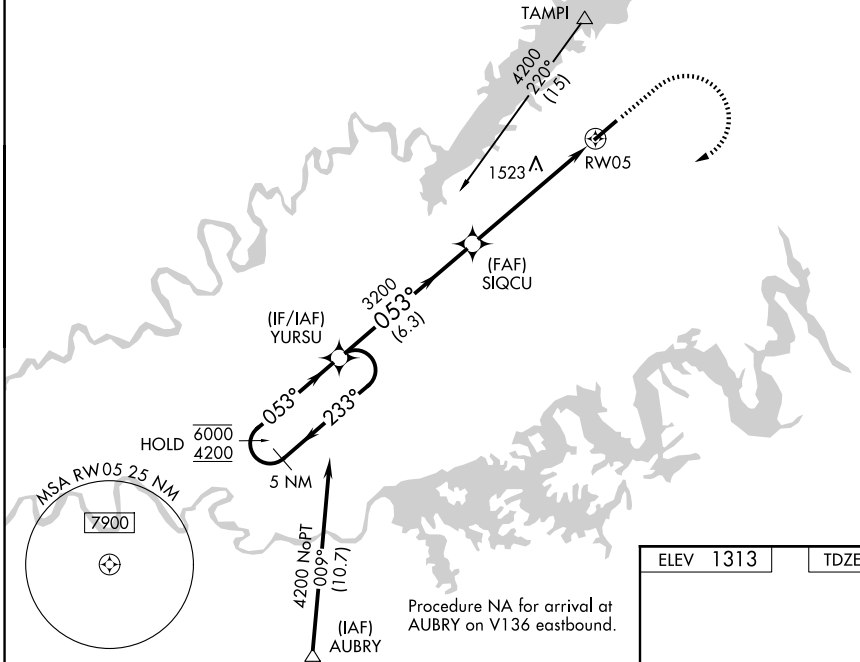
MISSED APPROACH: Climb to 2000 then climbing right turn to 4200 direct YURSU and hold.

AWOS-3  
**126.725**

KNOXVILLE APP CON  
**132.8 360.8**

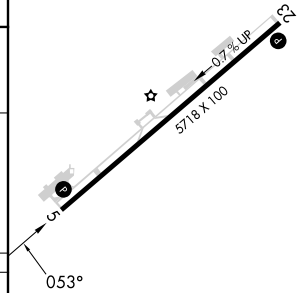
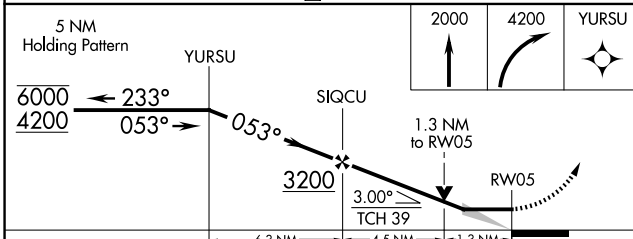
UNICOM  
**122.8 (CTAF)**

Procedure NA for arrival at TAMPI on V517 northwest bound and V466-519 northeast bound.



Procedure NA for arrival at AUBRY on V136 eastbound.

ELEV 1313	TDZE 1313
-----------	-----------



CATEGORY	A	B	C	D
LP MDA	1760-1	447 (500-1)	1760-1 $\frac{3}{8}$	447 (500-1 $\frac{3}{8}$ )
LNAV MDA	1780-1	467 (500-1)	1780-1 $\frac{3}{8}$	467 (500-1 $\frac{3}{8}$ )
CIRCLING	1880-1 567 (600-1)	2020-1 707 (800-1)	2160-2 $\frac{1}{2}$ 847 (900-2 $\frac{1}{2}$ )	2420-3 1107 (1200-3)

REIL Rwy 5 and 23  
MIRL Rwy 5-23

SE-1, 11 JUN 2026 to 09 JUL 2026

SE-1, 11 JUN 2026 to 09 JUL 2026