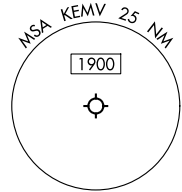


| | | |
|---|------------------------|---|
| LOC/DME I-EMV 108.75 Chan 24(Y) | APP CRS 335° | Rwy Ldg TDZE 122 Apt Elev 127 |
|---|------------------------|---|

LOC RWY 34

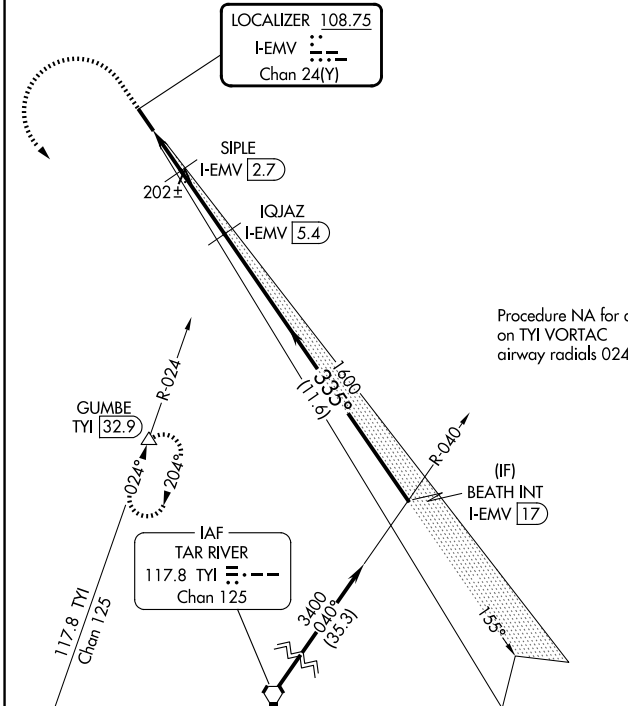
EMPORIA-GREENSVILLE RGNL (EMV)

| | | |
|--------------------------|---|--|
| DME required. ▼ ▲ | | MISSED APPROACH: Climb to 600 then climbing left turn to 3000 on heading 160° and TY1 VORTAC R-024 to GUMBE/TY1 32.9 DME and hold, continue climb-in-hold to 3000. |
| AWOS-3 124.175 | WASHINGTON CENTER 132.025 290.425 | UNICOM 123.0 (CTAF) 0 |

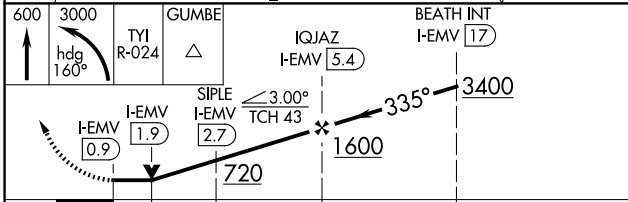


LOCALIZER 108.75
I-EMV
Chan 24(Y)

Procedure NA for arrival on TY1 VORTAC airway radials 024 CW 082.



| | |
|--|--------------------------|
| ELEV 127 | TDZE 122 |
| | |
| REIL Rwy 16 and 34 MIRL Rwy 16-34 0 | |
| FAF to MAP 4.6 NM | |
| Knots | 60 90 120 150 180 |
| Min:Sec | 4:36 3:04 2:18 1:50 1:32 |



| | | | | |
|----------|-------|-------------|--------|--------------|
| CATEGORY | A | B | C | D |
| S-LOC 34 | 480-1 | 358 (400-1) | 680-1½ | 553 (600-1½) |
| CIRCLING | 580-1 | 453 (500-1) | NA | NA |

NE-3, 11 JUN 2026 to 09 JUL 2026

NE-3, 11 JUN 2026 to 09 JUL 2026