

WAAS CH <b>69532</b> <b>W10A</b>	APP CRS <b>103°</b>	Rwy Ldg TDZE Apt Elev	<b>5006</b> <b>897</b> <b>906</b>
--	------------------------	-----------------------------	---

# RNAV (GPS) RWY 10

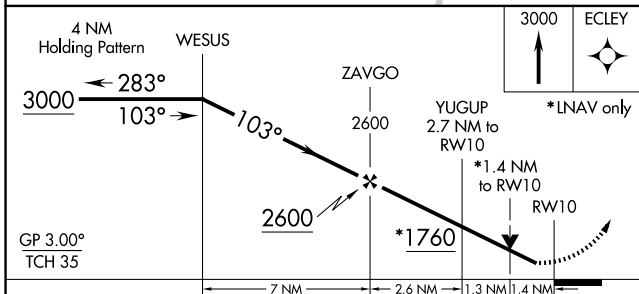
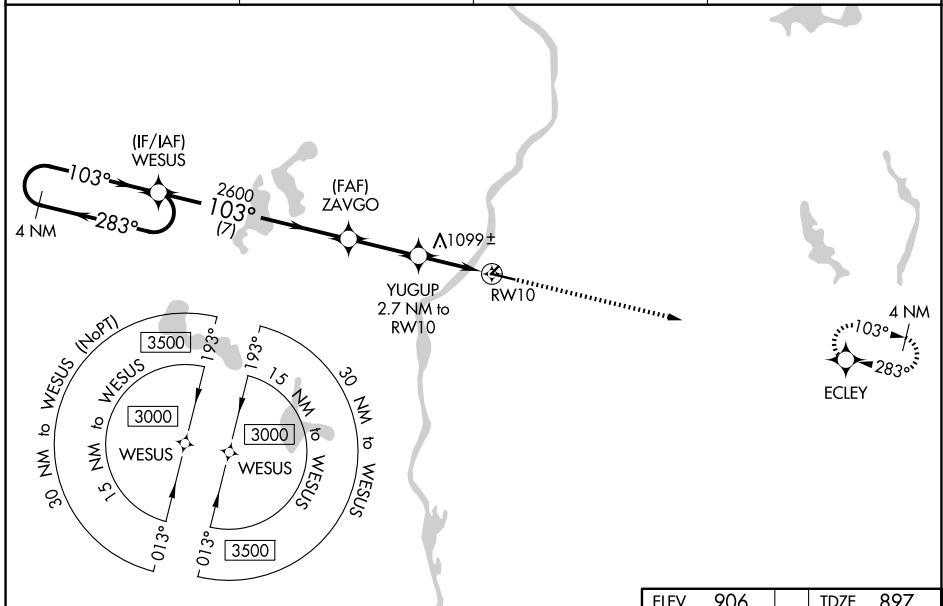
L O SIMENSTAD MUNI (O/E O)

RNP APCH - GPS.

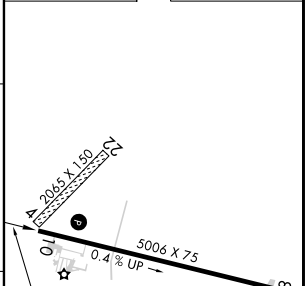
▼ For uncompensated Baro-VNAV systems, LNAV/VNAV NA below -16°C or above 54°C. VDP and Baro-VNAV NA when using Anoka County/Blaine (Janes Fld) altimeter setting. When local altimeter setting not received, use Anoka County/Blaine (Janes Fld) altimeter setting; increase LPV DA to 1204 feet and visibility all Cats ¼ SM; increase LNAV/VNAV DA to 1247 feet and visibility all Cats ¼ SM; increase all MDAs 60 feet and visibility LNAV Cat C ¼ SM and Circling Cat C ¼ SM. Rwy 10 helicopter visibility reduction below ¾ SM NA. Circling NA to Rwy 4 and 22.

MISSED APPROACH: Climb to 3000 direct ECLEY and hold.

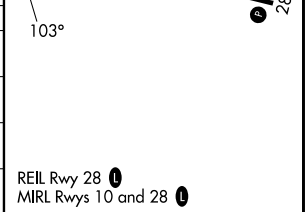
AWOS-3 <b>119.925</b>	MINNEAPOLIS APP CON <b>121.2 335.65</b>	GCO <b>121.725</b>	CTAF <b>122.9</b>
--------------------------	--	-----------------------	----------------------



ELEV	906	TDZE	897
------	-----	------	-----



CATEGORY	A	B	C	D
LPV DA	1147-7/8 250 (300-7/8)			NA
LNAV/VNAV DA	1190-1 293 (300-1)			NA
LNAV MDA	1360-1	463 (500-1)	1360-1 3/8 463 (500-1 3/8)	NA
CIRCLING	1360-1 454 (500-1)	1500-1 594 (600-1)	1520-1 3/4 614 (700-1 3/4)	NA



EC-3, 11 JUN 2026 to 09 JUL 2026

EC-3, 11 JUN 2026 to 09 JUL 2026