

LOC/DME I-FZY <b>110.9</b> Chan <b>46</b>	APP CRS <b>330°</b>	Rwy Ldg <b>4782</b> TDZE <b>471</b> Apt Elev <b>475</b>
---	------------------------	---

# ILS or LOC RWY 33

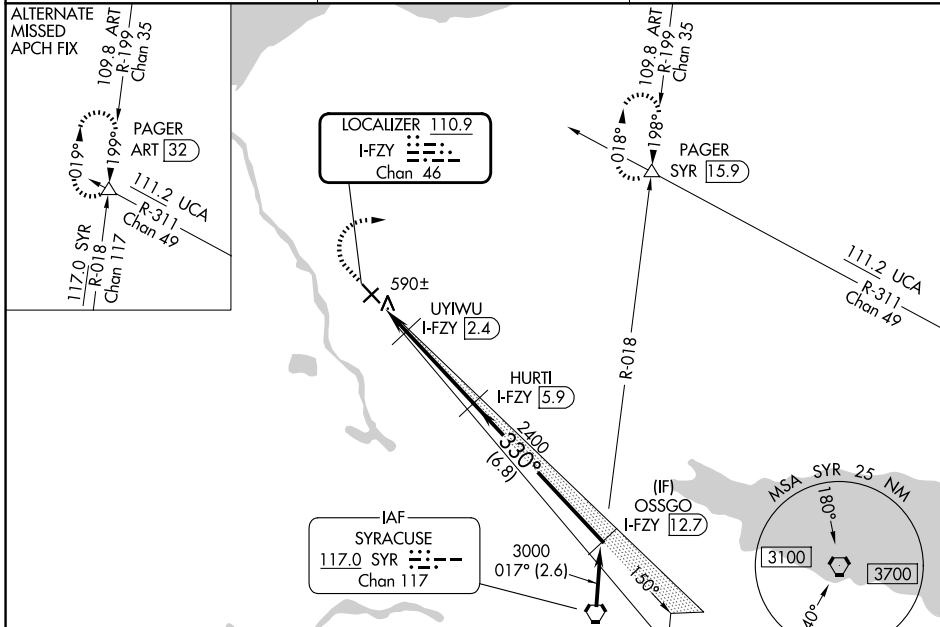
OSWEGO COUNTY (FZY)

DME required.

▼  
▲ NA Circling Rwy 24 NA at night.  
Rwy 33 helicopter visibility reduction below ¾ SM NA.

MISSED APPROACH: Climb to 1200 then climbing right turn to 3000 on heading 100° and SYR VORTAC R-018 to PAGER/SYR 15.9 DME and hold.

ASOS <b>119.275</b>	SYRACUSE APP CON <b>126.125 269.125</b>	UNICOM <b>123.0 (CTAF) 0</b>
------------------------	--	---------------------------------

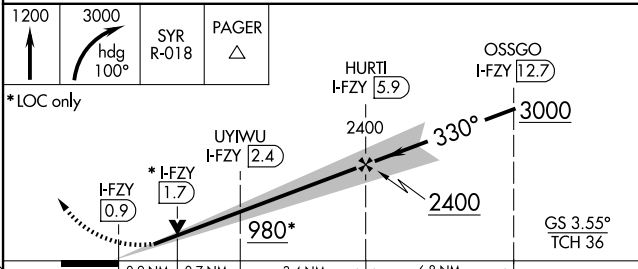
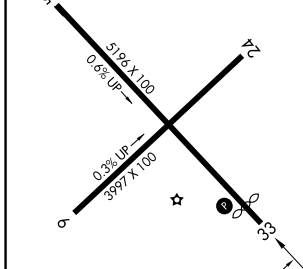


NE-2, 11 JUN 2026 to 09 JUL 2026

NE-2, 11 JUN 2026 to 09 JUL 2026

ELEV <b>475</b>	<b>D</b>	TDZE <b>471</b>
-----------------	----------	-----------------

Procedure NA for arrivals at SYR VORTAC on V29 southbound.



CATEGORY	A	B	C	D
S-ILS 33	814-1	343 (400-1)		NA
S-LOC 33	840-1	369 (400-1)		NA
CIRCLING	920-1 445 (500-1)	940-1 465 (500-1)	960-1½ 485 (500-1½)	NA