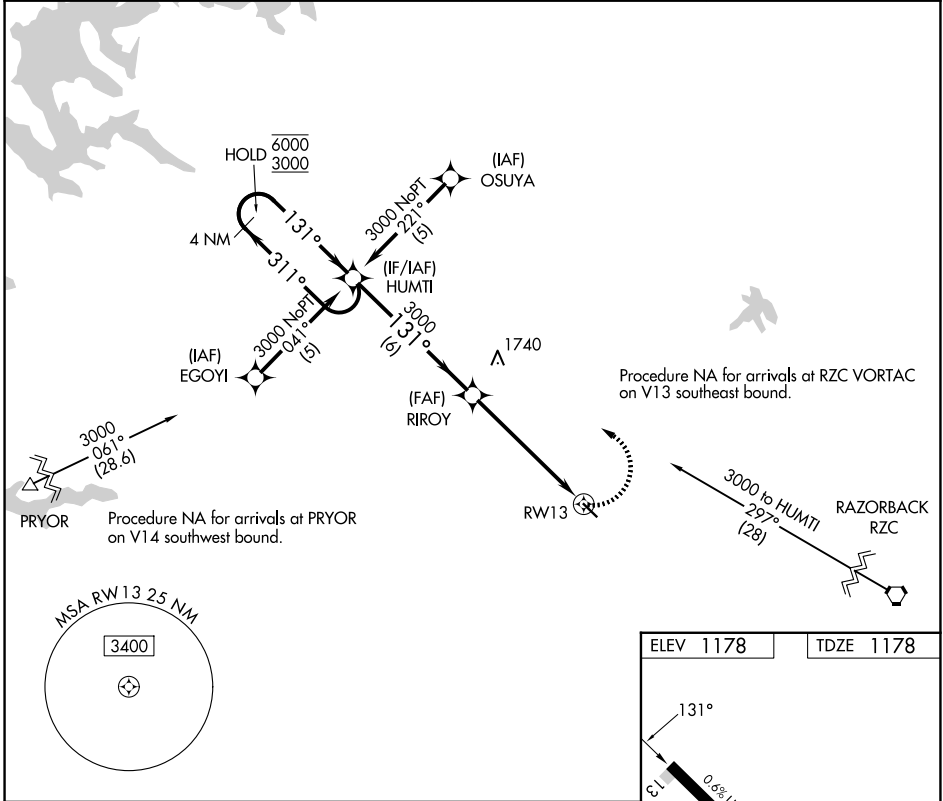


APP CRS 131°	Rwy Ldg TDZE Apt Elev	3863 1178 1178
------------------------	-----------------------------	---

RNAV (GPS) RWY 13

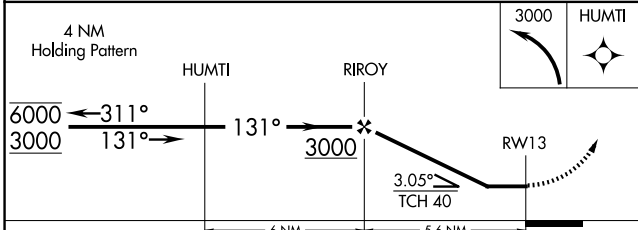
CRYSTAL LAKE (5M5)

RNP APCH - GPS.		MISSED APPROACH: Climbing left turn to 3000 direct HUMTI and hold.	
<p>Procedure NA at night. Rwy 13 helicopter visibility reduction below 1 SM NA. Use Northwest Arkansas Nil altimeter setting; if not received, use Joplin Rgnl altimeter setting and increase all MDAs 120 feet and LNAV Cat C and Circling Cat B visibility ¼ SM and Circling Cat C visibility ½ SM. Circling NA for Cat C southwest of Rwy 13-31.</p>			
XNA ASOS 119.425	RAZORBACK APP CON * 121.0 244.575	CLNC DEL 126.6	UNICOM 122.8 (CTAF)



SC-1, 11 JUN 2026 to 09 JUL 2026

SC-1, 11 JUN 2026 to 09 JUL 2026



ELEV 1178	TDZE 1178			
CATEGORY	A	B	C	D
LNAV MDA	1720-1	542 (600-1)	1720-1½ 542 (600-1½)	NA
CIRCLING	1820-1 642 (700-1)	1900-1 722 (800-1)	1940-2¼ 762 (800-2¼)	NA
LURL Rwy 13-31				