

WAAS CH 82237 W18A	APP CRS 176°	Rwy Ldg TDZE Apt Elev	5001 1477 1477
--	------------------------	-----------------------------	---

RNAV (GPS) RWY 18

ALVA RGNL (AVK)

RNP APCH-GPS

For uncompensated Baro-VNAV systems, LNAV/VNAV NA below -17°C (2°F) or above 54°C (130°F). When local altimeter setting not received, use Vance AFB altimeter setting and increase all DA 127 feet and all MDA 140 feet; increase LPV all Cats and LNAV Cat C visibility 3/8 mile, LNAV/VNAV all Cats and Circling Cat C visibility 1/2 mile. Baro-VNAV and VDP NA when using Vance AFB altimeter setting. Helicopter visibility reduction below 3/4 SM NA. Circling to Rwy 9/27 NA.

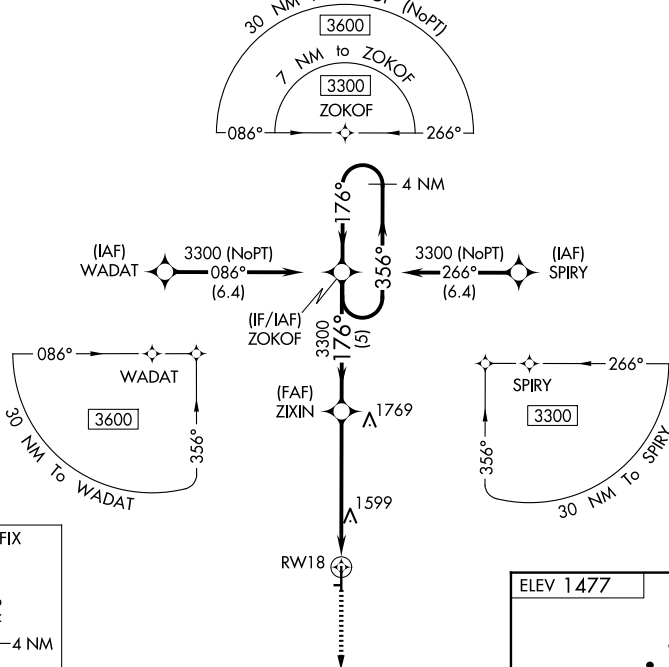


MISSED APPROACH:
Climb to 3300 direct
HINEN and hold.

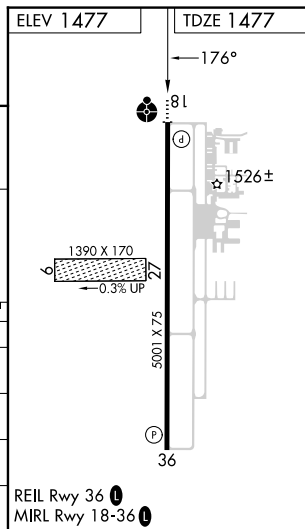
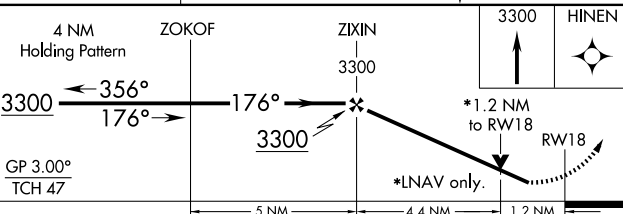
AWOS-3PT
121.125

VANCE APP CON*
126.75 346.325

UNICOM
122.8 (CTAF) 0



MISSED APCH FIX



CATEGORY	A	B	C	D
LPV DA	1738-7/8	261 (300-7/8)		NA
LNAV/VNAV DA	1748-7/8	271 (300-7/8)		NA
LNAV MDA	1900-1	423 (500-1)	1900-1 1/4 423 (500-1 1/4)	NA
CIRCLING	1980-1 503 (600-1)	2120-1 643 (700-1)	2220-2 1/4 743 (800-2 1/4)	NA

SC-1, 11 JUN 2026 to 09 JUL 2026

SC-1, 11 JUN 2026 to 09 JUL 2026