

WAAS CH <b>49223</b> <b>W10A</b>	APP CRS <b>102°</b>	Rwy Idg TDZE Apt Elev	<b>5060</b> <b>974</b> <b>974</b>
--	------------------------	-----------------------------	---

# RNAV (GPS) RWY 10

POLK COUNTY/CORNELIUS MOORE FLD (4A4)

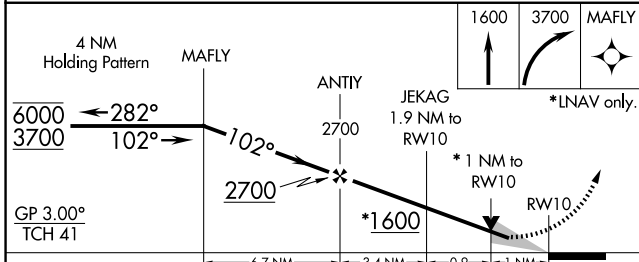
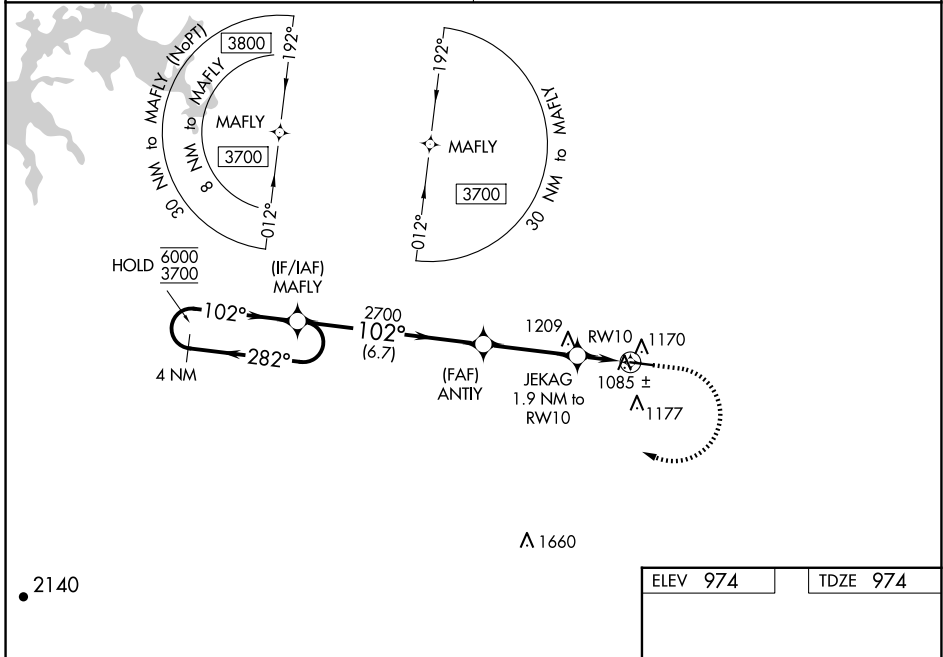
RNP APCH.

**⚠** Baro-VNAV and VDP NA when using Cartersville altimeter setting.  
**⚠ NA** For uncompensated Baro-VNAV systems, LNAV/VNAV NA below -8°C or above 54°C. Obtain local altimeter setting on CTAF, when not received, use Cartersville altimeter setting and increase LPV DA to 1292 feet; increase LNAV/VNAV DA to 1424 feet and all visibilities ¼ SM; increase all MDA 80 feet; increase LNAV visibility Cats C and D ⅜ SM.

MISSED APPROACH: Climb to 1600 then climbing right turn to 3700 direct MAFLY and hold.

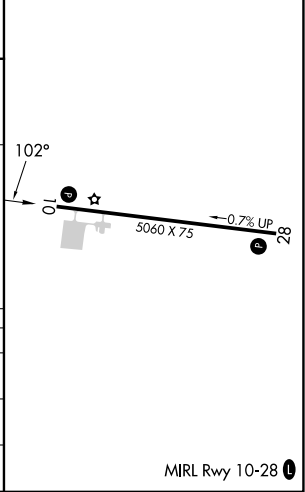
ATLANTA CENTER  
**124.5 270.325**

UNICOM  
**122.8 (CTAF)**



ELEV 974	TDZE 974
----------	----------

CATEGORY	A	B	C	D
LPV DA		1224-1	250 (300-1)	
LNAV/VNAV DA		1356-1⅛	382 (400-1⅛)	
LNAV MDA		1340-1	366 (400-1)	



MIRL Rwy 10-28

# RNAV (GPS) RWY 10