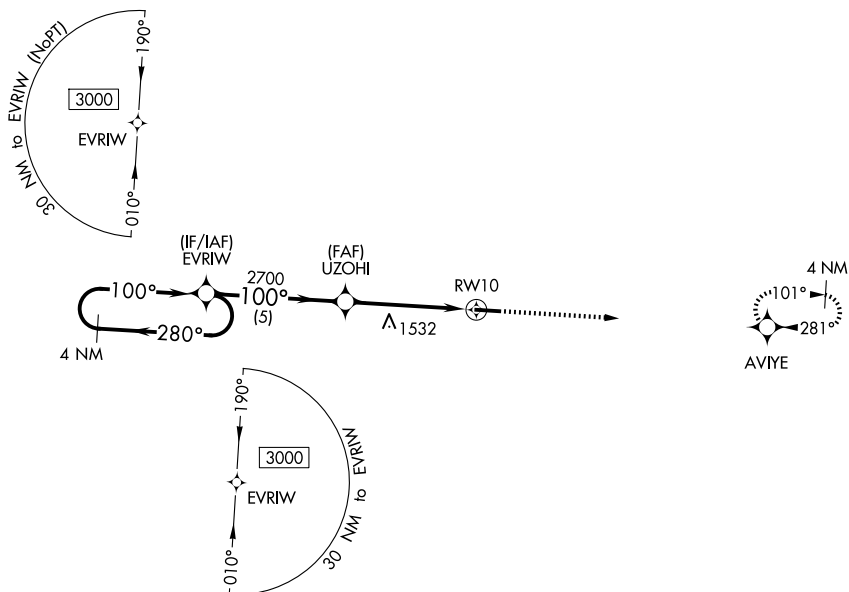


WAAS CH <b>77534</b> <b>W10A</b>	APP CRS <b>100°</b>	Rwy Ldg TDZE Apt Elev	<b>5000</b> <b>1172</b> <b>1184</b>
--	------------------------	-----------------------------	---

# RNAV (GPS) RWY 10

HILLSDALE MUNI (JYM)

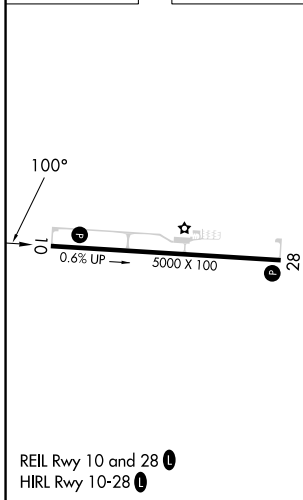
<p><b>▽</b> For uncompensated Baro-VNAV systems, LNAV/VNAV NA below -17°C (2°F) or above 54°C (130°F). DME/DME RNP-0.3 NA.</p>		<p>MISSED APPROACH: Climb to 3100 direct AVIYE and hold.</p>
AWOS-3P <b>121.025</b>	TOLEDO APP CON <b>134.35 317.55</b>	UNICOM <b>122.8 (CTAF) 0</b>



EC-1, 11 JUN 2026 to 09 JUL 2026

EC-1, 11 JUN 2026 to 09 JUL 2026

ELEV 1184	TDZE 1172
-----------	-----------



4 NM Holding Pattern		EVRIW		UZOHI		RWY 10		3100	AVIYE
3000		280°		100°		2700		↑	✦
100°		100°		*1.6 NM to RWY 10		RWY 10			
GP 3.00°		TCH 46		5 NM		3.1 NM		*LNAV only	
100°		100°		2700		1.6 NM			
CATEGORY	A	B	C	D					
LPV DA	1441-1		269 (300-1)		NA				
LNAV/VNAV DA	1601-1½		429 (500-1½)		NA				
LNAV MDA	1720-1		548 (600-1)		1720-1⅝		548 (600-1⅝)		
CIRCLING	1720-1		536 (600-1)		1720-1⅝		536 (600-1⅝)		