

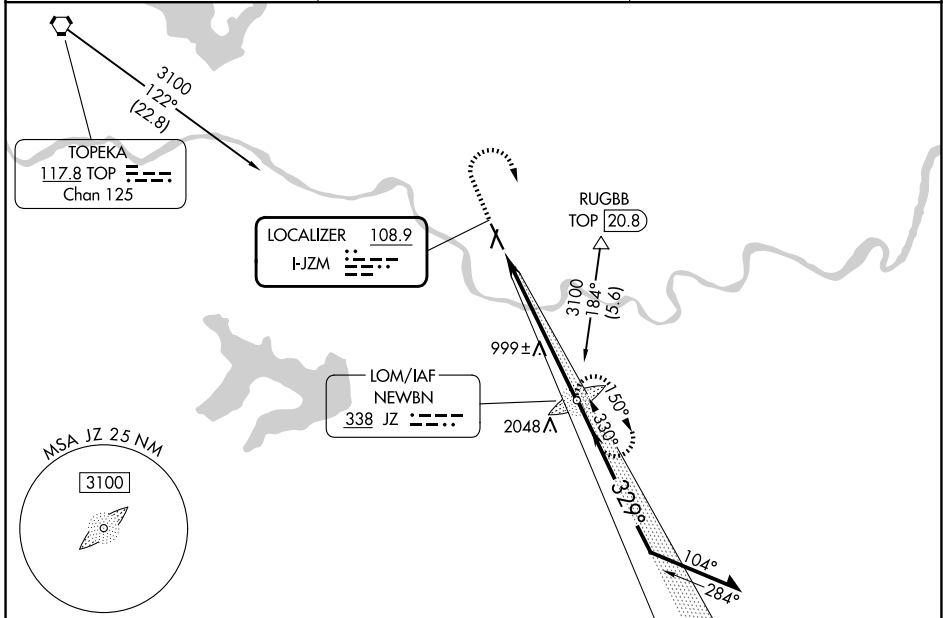
LOC I-JZM 108.9	APP CRS 329°	Rwy Ldg 5701 TDZE 831 Apt Elev 833
---------------------------	------------------------	---

ILS or LOC RWY 33

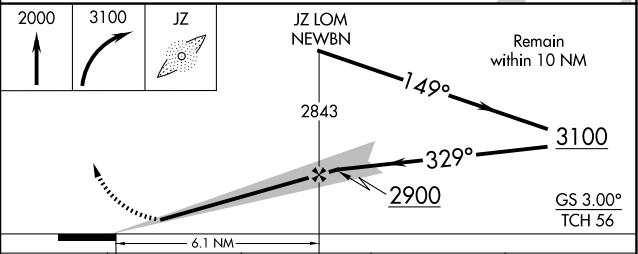
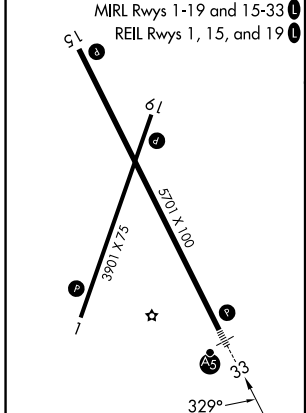
LAWRENCE RGNL (LWC)

ADF required.	MALSR 	MISSED APPROACH: Climb to 2000 then climbing right turn to 3100 direct NEWBN LOM and hold.
<p> When local altimeter setting not received, use TOP altimeter setting and increase DA to 1083 feet; increase all MDAs 60 feet and S-LOC 33 and Circling visibility Cat C ¼ SM.</p>		

ASOS 121.225	KANSAS CITY CENTER 123.8 343.7	UNICOM 123.0 (CTAF)
------------------------	--	-------------------------------



ELEV 833	TDZE 831
-----------------	-----------------



FAF to MAP 6.1 NM					
Knots	60	90	120	150	180
Min:Sec	6:06	4:04	3:03	2:26	2:02

CATEGORY	A	B	C	D
S-ILS 33	1031-½ 200 (200-½)			NA
S-LOC 33	1260-½ 429 (500-½)		1260-¾ 429 (500-¾)	NA
CIRCLING	1420-1 587 (600-1)	1480-1 647 (700-1)	1620-2¼ 787 (800-2¼)	NA

NC-2, 11 JUN 2026 to 09 JUL 2026

NC-2, 11 JUN 2026 to 09 JUL 2026