

APP CRS	Rwy Ldg	4800
047°	TDZE	659
	Apt Elev	666

RNAV (GPS) RWY 5

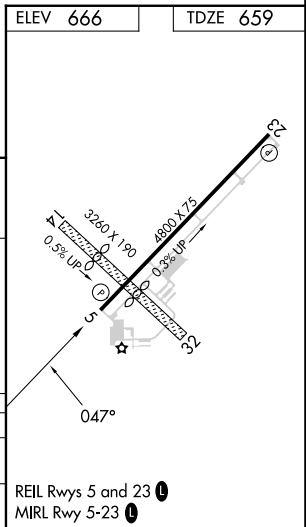
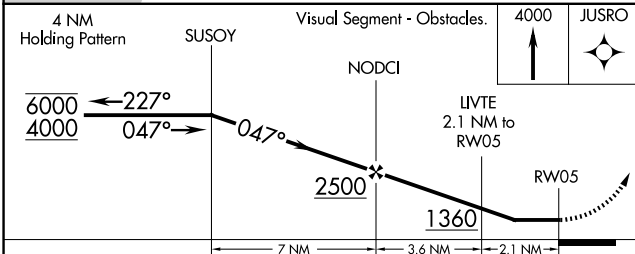
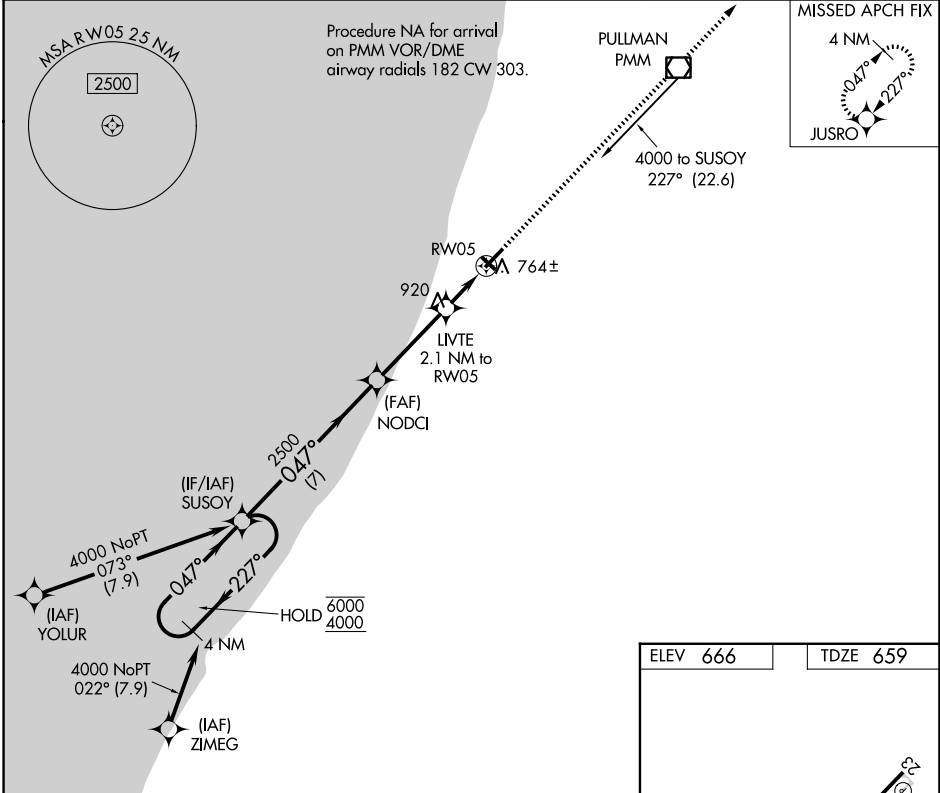
SOUTH HAVEN AREA RGNL (LWA)

RNP APCH - GPS.

▼ Rwy 5 helicopter visibility reduction below 3/4 SM NA.
▲ Circling NA to Rwy's 14 and 32.

MISSED APPROACH: Climb to 4000 direct JUSRO and hold, continue climb-in-hold to 4000.

AWOS-3P 118.025	SOUTH BEND APP CON* 118.55 257.8	UNICOM 122.8 (CTAF)
---------------------------	--	-------------------------------



EC-1, 11 JUN 2026 to 09 JUL 2026

EC-1, 11 JUN 2026 to 09 JUL 2026