


LOC I-HUV <b>109.55</b>	APP CRS <b>019°</b>	Rwy Ldg <b>6506</b>
		TDZE <b>300</b>
		Apt Elev <b>303</b>

# ILS or LOC RWY 2

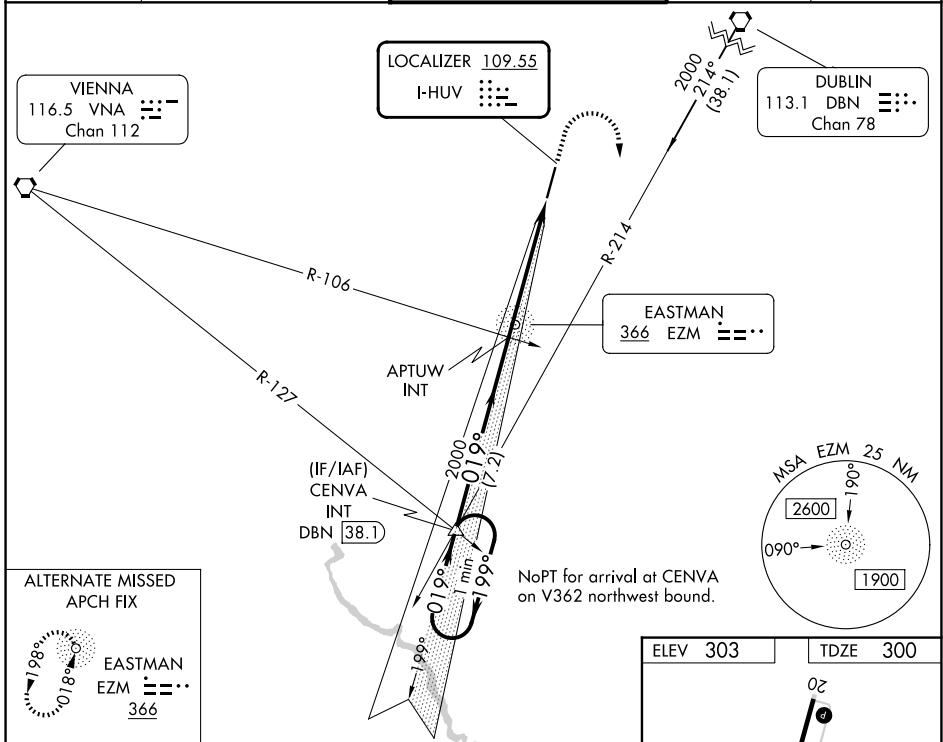
HEART OF GEORGIA RGNL (E2M)

**⚠** When local altimeter setting not received, use Dublin altimeter setting and increase all DA 52 feet and all MDA 60 feet; increase S-LOC 2 Cat C/D and Circling Cat C visibility ¼ mile.

**MALSR** 

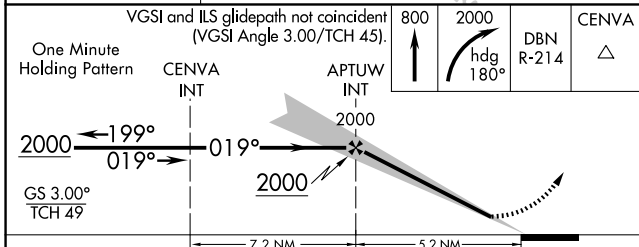
**MISSED APPROACH:** Climb to 800 then climbing right turn to 2000 on heading 180° and DBN VORTAC R-214 to CENVA INT and hold.

ATIS <b>119.425</b>	JACKSONVILLE CENTER <b>127.575 269.025</b>	HEART OF GEORGIA TOWER ★ <b>124.55 (CTAF) 0</b>	GND CON <b>121.175</b>	UNICOM <b>122.95</b>
------------------------	---	--	---------------------------	-------------------------



**ALTERNATE MISSED APCH FIX**

EASTMAN E2M 366



ELEV 303	TDZE 300
----------	----------

6506 X 100

TWR

019°

HIRL Rwy 2-20

REIL Rwy 20

FAF to MAP 5.2 NM					
Knots	60	90	120	150	180
Min:Sec	5:12	3:28	2:36	2:05	1:44

CATEGORY	A	B	C	D
S-ILS 2		500-½	200 (200-½)	
S-LOC 2	820-½	520 (600-½)	820-1	520 (600-1)
CIRCLING	820-1	517 (600-1)	900-1½ 597 (600-1½)	900-2 597 (600-2)

SE-4, 11 JUN 2026 to 09 JUL 2026

SE-4, 11 JUN 2026 to 09 JUL 2026