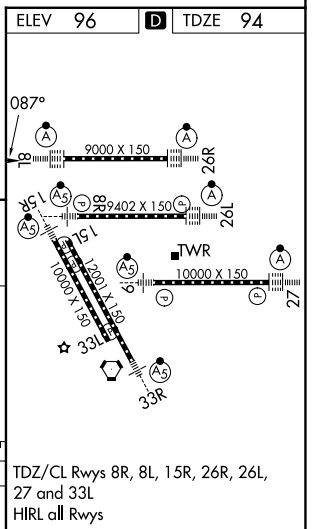
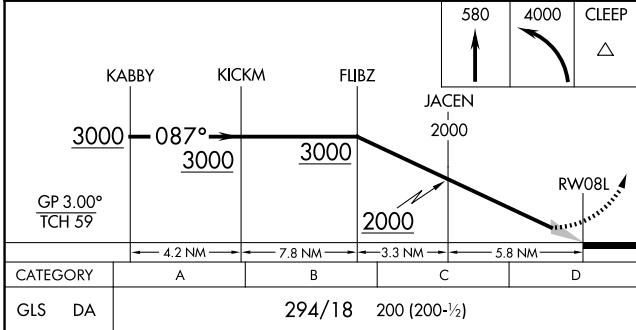
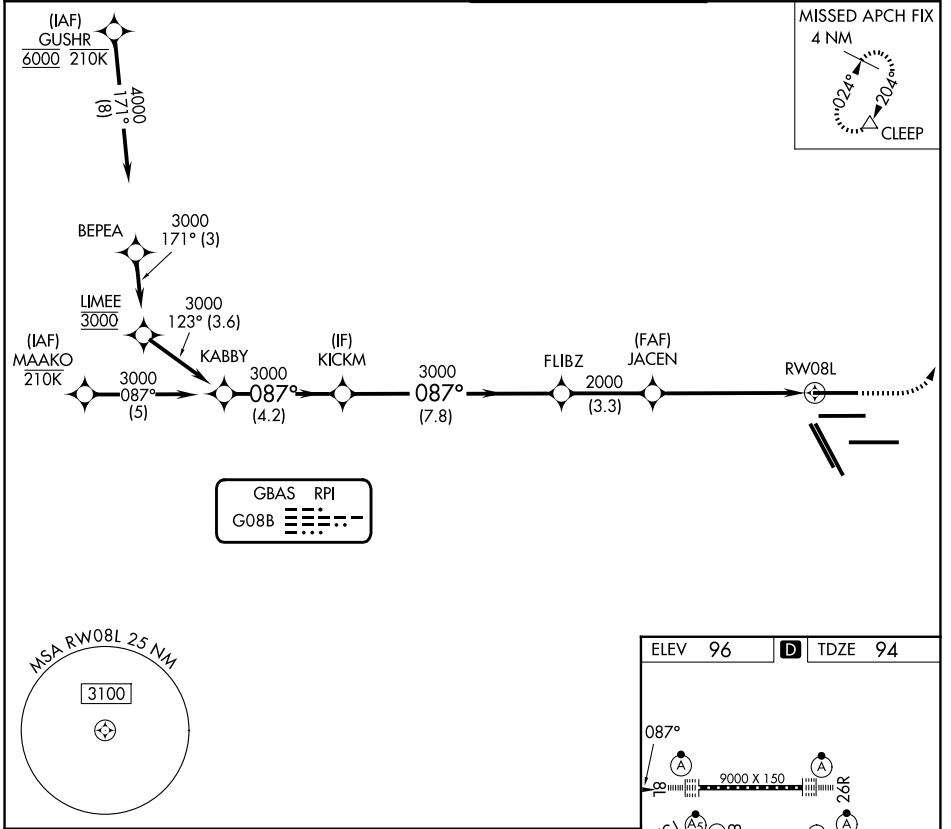


GBAS CH 21073 G08B	APP CRS 087°	Rwy Ldg TDZE Apt Elev	9000 94 96
--	------------------------	-----------------------------	---------------------------------------

GLS RWY 8L

GEORGE BUSH INTCNTL/HOUSTON (IAH)

RNP APCH - GPS.		ALSIF-2	MISSED APPROACH: Climb to 580 then climbing left turn to 4000 direct CLEEP and hold.
<p>▼ Use of FD or AP required during simultaneous operations. Autopilot coupled</p> <p>▲ NA approach NA below 294. Simultaneous approach authorized.</p>			
D-ATIS 124.05	HOUSTON APP CON 120.05 379.1 E 124.35 316.15 W	HOUSTON TOWER 120.725 290.2	GND CON 118.575



HOUSTON, TEXAS	GEORGE BUSH INTCNTL/HOUSTON (IAH)
Amdt 2 23FEB23	29°59'N-95°20'W

GLS RWY 8L

SC-5, 11 JUN 2026 to 09 JUL 2026

SC-5, 11 JUN 2026 to 09 JUL 2026