

WAAS CH 65731 W17A	APP CRS 174°	Rwy Ldg TDZE Apt Elev	5862 3244 3245
--	------------------------	-----------------------------	---

RNAV (GPS) RWY 17

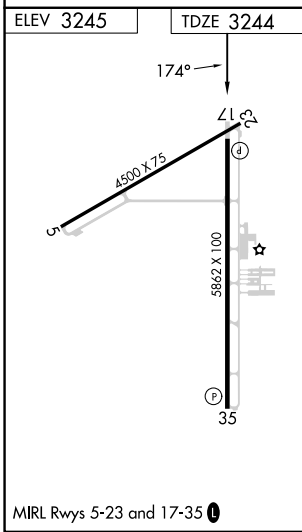
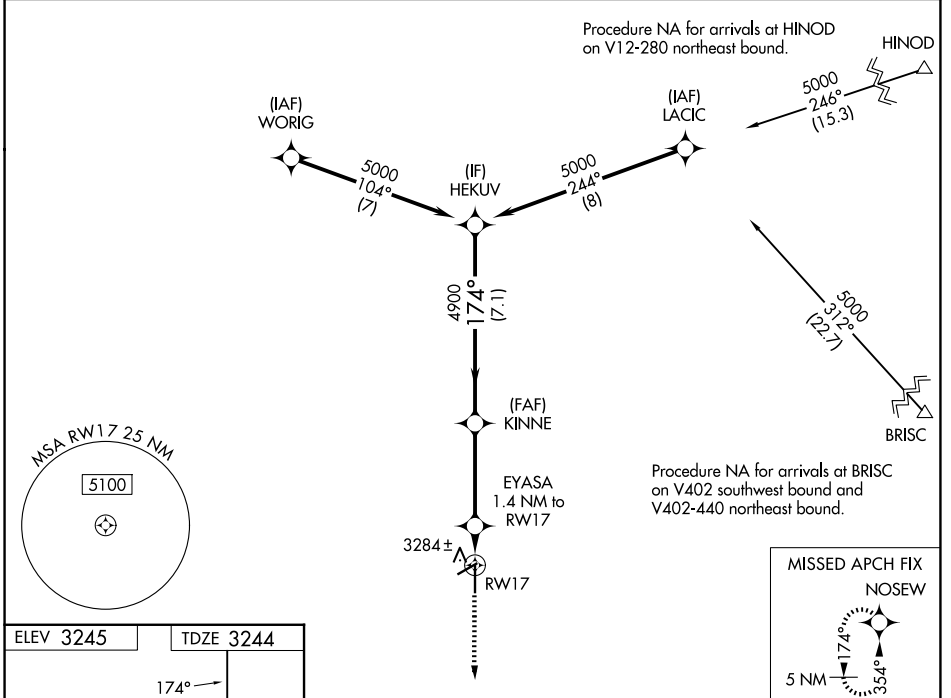
PERRY LEFORS FLD (PPA)

RNP APCH - GPS.

▼ Rwy 17 helicopter visibility reduction below 1 SM NA. For uncompensated Baro-VNAV systems, LNAV/VNAV NA below -21°C or above 54°C. Procedure NA at night.

▲ MISSED APPROACH: Climb to 6000 direct NOSEW and hold, continue climb-in-hold to 6000.

AWOS-3 118.725	ALBUQUERQUE CENTER 127.85 285.475	UNICOM 122.7 (CTAF) 0
--------------------------	---	---------------------------------



6000 NOSEW	HEKUV			
EYASA 1.4 NM to RWY 17	KINNE 4900	5000		
3720	4900	5000	GP 3.00° TCH 45	
1.4 NM	3.7 NM	7.1 NM		
CATEGORY	A	B	C	D
LPV DA		3494-3/4	250 (300-3/4)	
LNAV/VNAV DA		3494-3/4	250 (300-3/4)	
LNAV MDA		3540-1	296 (300-1)	
CIRCLING	3700-1	455 (500-1)	3880-1 3/4 635 (700-1 3/4)	3960-2 1/4 715 (800-2 1/4)

SC-2, 11 JUN 2026 to 09 JUL 2026

SC-2, 11 JUN 2026 to 09 JUL 2026