

WAAS CH 63123 W10A	APP CRS 104°	Rwy Ldg TDZE 1192 Apt Elev 1192
--	------------------------	---

RNAV (GPS) RWY 10

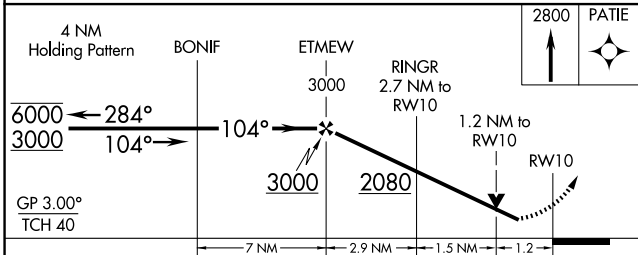
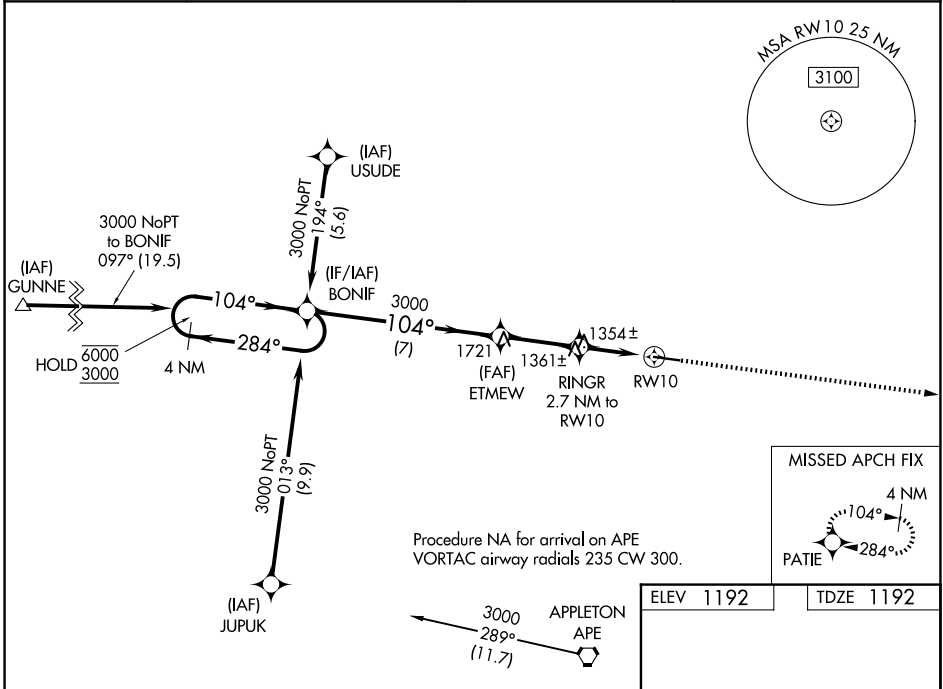
KNOX COUNTY (4I3)

RNP APCH - GPS.

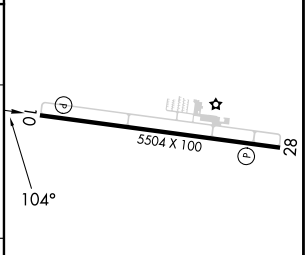
⚠ Rwy 10 helicopter visibility reduction below 3/4 SM NA. For uncompensated Baro-VNAV systems, LNAV/VNAV NA below -17°C or above 54°C.

MISSED APPROACH: Climb to 2800 direct PATIE and hold.

AWOS-3PT 126.05	COLUMBUS APP CON 125.95 317.775	CLNC DEL 119.45	UNICOM 123.05 (CTAF) 0
---------------------------	---	---------------------------	----------------------------------



ELEV 1192	TDZE 1192
-----------	-----------



CATEGORY	A	B	C	D
LPV DA	1520-1		328 (400-1)	
LNAV/VNAV DA	1599-1 1/8		407 (500-1 1/8)	
LNAV MDA	1620-1 428 (500-1)		1620-1 1/4 428 (500-1 1/4)	

MIRL Rwy 10-28 0
REIL Rwy 10 and 28 0

EC-2, 11 JUN 2026 to 09 JUL 2026

EC-2, 11 JUN 2026 to 09 JUL 2026