

WAAS CH <b>56234</b> <b>W18A</b>	APP CRS <b>184°</b>	Rwy Ldg <b>3800</b> TDZE <b>835</b> Apt Elev <b>835</b>
--	------------------------	---

# RNAV (GPS) RWY 18

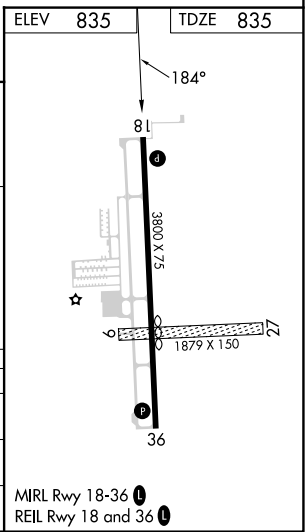
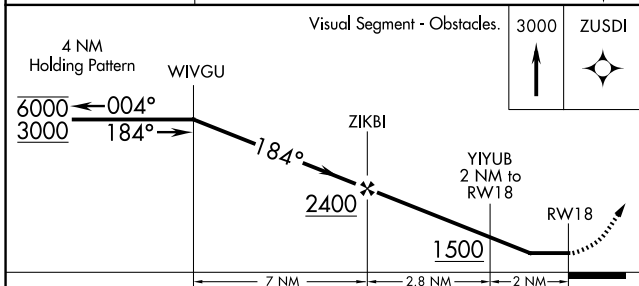
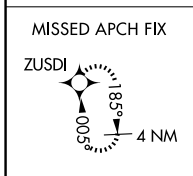
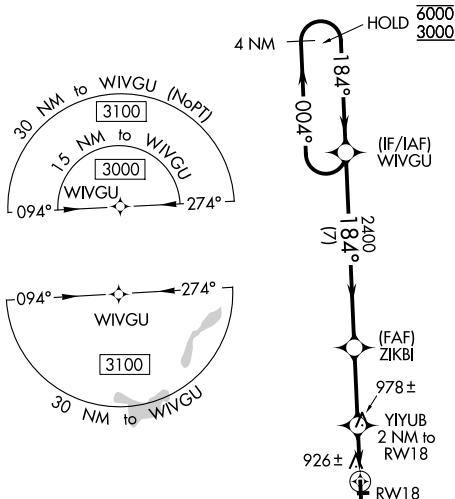
DUPONT/LAPEER (D95)

RNP APCH - GPS.

**▼** Rwy 18 helicopter visibility reduction below 1 SM NA. Circling NA to Rws 9 and 27.  
**▲** When local altimeter setting not received, use FNT altimeter setting and increase all MDAs 60 feet and increase LP Cat C visibility 1/8 SM, LNAV Cat C and Circling Cat C visibility 1/4 SM.

**MISSED APPROACH:**  
 Climb to 3000 direct  
 ZUSDI and hold.

AWOS-3P <b>134.05</b>	GREAT LAKES APP CON ★ <b>118.8 257.9</b>	UNICOM <b>123.0 (CTAF) 0</b>
--------------------------	---	---------------------------------



CATEGORY	A	B	C	D
LP MDA	1180-1 345 (400-1)			NA
LNAV MDA	1240-1	405 (500-1)	1240-1 1/8 405 (500-1 1/8)	NA
CIRCLING	1300-1 465 (500-1)	1380-1 545 (600-1)	1460-1 3/4 625 (700-1 3/4)	NA

EC-1, 11 JUN 2026 to 09 JUL 2026

EC-1, 11 JUN 2026 to 09 JUL 2026