

LOC I-PPHN 110.9	APP CRS 043°	Rwy Ldg 5104
		TDZE 647
		Apt Elev 650

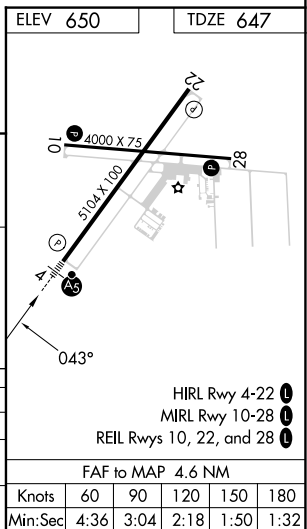
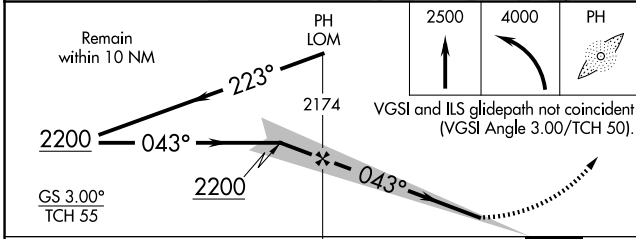
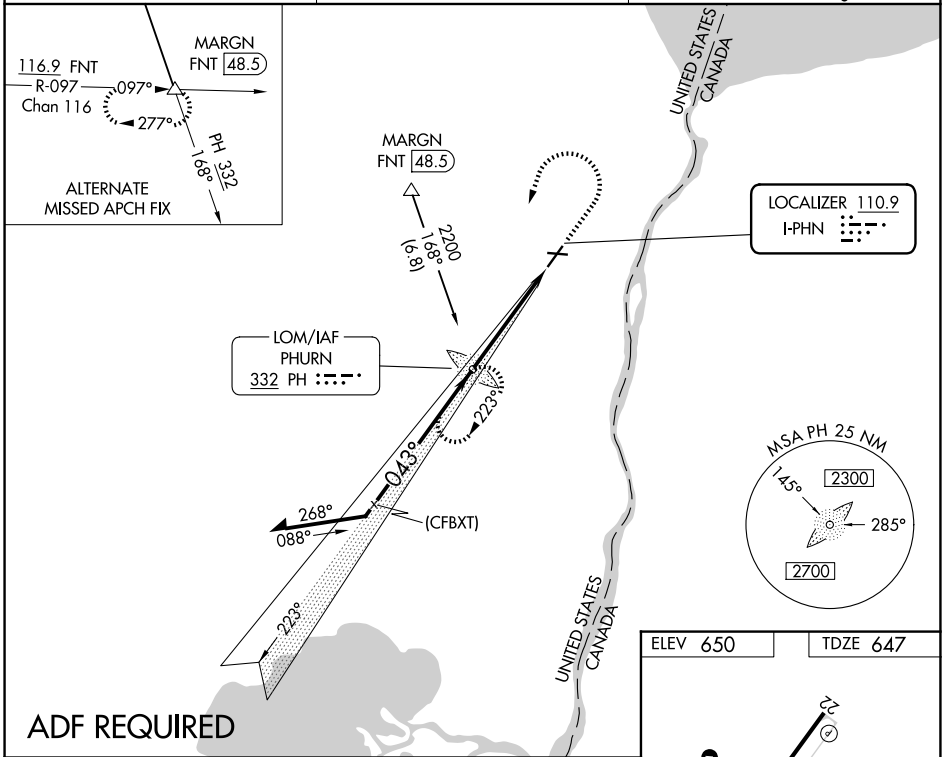
ILS or LOC RWY 4

ST CLAIR COUNTY INTL (PHN)

NA ADF required. When local altimeter setting not received, use Troy altimeter setting and increase all DA 95 feet and all MDA 100 feet; increase S-LOC 4 Cats C and D and Circling Cats C and D visibility ¼ mile. For inop MALSR when using Troy altimeter setting, increase S-ILS 4 all Cats visibility to ¾ mile. Night landing: Rwy 10, 22, 28 NA.

MALSR MISSED APPROACH: Climb to 2500 then climbing left turn to 4000 direct PHURN LOM and hold, continue climb-in-hold to 4000.

AWOS-3P 118.375	SELFDRIGE APP CON ★ 119.6 391.9	UNICOM 123.05 (CTAF)
---------------------------	---	--------------------------------



CATEGORY	A	B	C	D
S-ILS 4		847-½	200 (200-½)	
S-LOC 4	1100-½	453 (500-½)	1100-¾	453 (500-¾)
CIRCLING	1160-1	510 (600-1)	1260-1¼ 610 (700-1¼)	1260-2 610 (700-2)

ELEV 650	TDZE 647
HIRL Rwy 4-22	MIRL Rwy 10-28
REIL Rws 10, 22, and 28	
FAF to MAP 4.6 NM	
Knots	60 90 120 150 180
Min:Sec	4:36 3:04 2:18 1:50 1:32