

LOC I-HYS 111.5	APP CRS 339°	Rwy Ldg TDZE Apt Elev	6501 1994 1999
---------------------------	------------------------	-----------------------------	---

ILS or LOC RWY 34

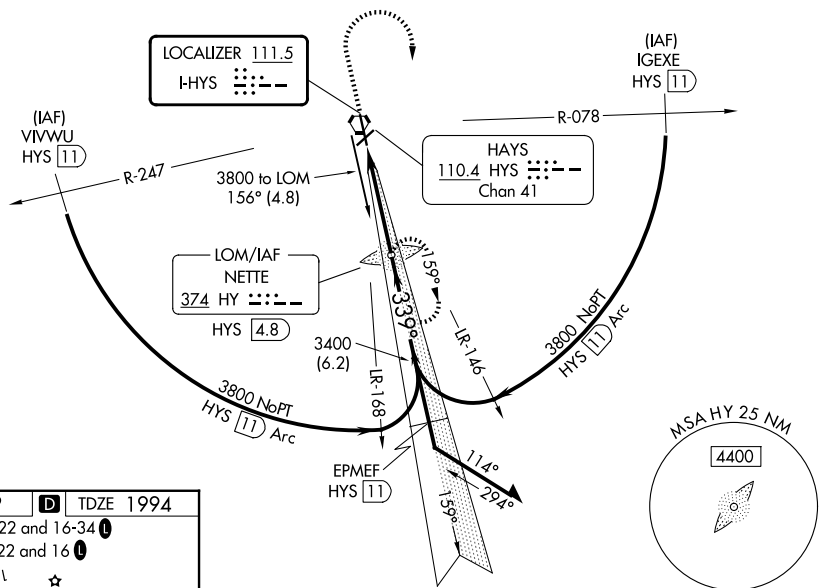
HAYS RGNL (HYS)

NA ADF required. Circling NA for Cat D northwest of Rwy 4 and west of Rwy 16. When local altimeter setting not received, use Russell altimeter setting: increase DA to 2263 feet; increase all MDA 80 feet and visibility S-LOC 34 Cat C and Circling Cat C and D ¼ SM. For inoperative MALSRS when using Russell altimeter setting, increase S-ILS all Cats visibility to 1.

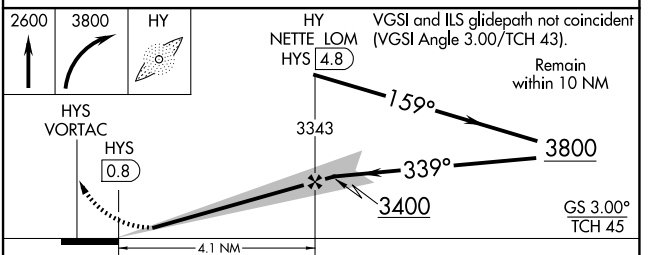
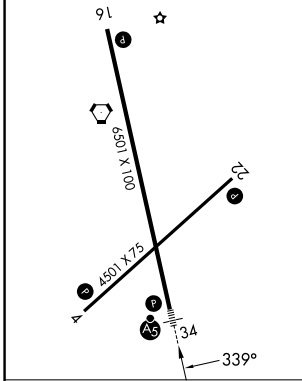
MALSRS
MISSED APPROACH: Climb to 2600 then climbing right turn to 3800 direct NETTE LOM/HYS 4.8 DME and hold.

AWOS-3PT 125.525	KANSAS CITY CENTER 124.4 322.4	UNICOM 122.8 (CTAF)
----------------------------	--	-------------------------------

ADF or DME REQUIRED



ELEV 1999 **D** TDZE 1994
MIRL Rwy 4-22 and 16-34 **I**
REIL Rwy 4, 22 and 16 **I**



CATEGORY	A	B	C	D
S-ILS 34	2194-½		200 (200-½)	
S-LOC 34	2340-½		346 (400-½)	
CIRCLING	2480-1		2560-1½	
	481 (500-1)		561 (600-1½)	
			2340-¾	
			346 (400-¾)	
			2680-2¼	
			681 (700-2¼)	

FAF to MAP 4.1 NM

Knots	60	90	120	150	180
Min:Sec	4:06	2:44	2:03	1:38	1:22

HAYS, KANSAS
Orig-F 27JAN22

38°51'N-99°16'W

ILS or LOC RWY 34

HAYS RGNL (HYS)

NC-2, 11 JUN 2026 to 09 JUL 2026

NC-2, 11 JUN 2026 to 09 JUL 2026