

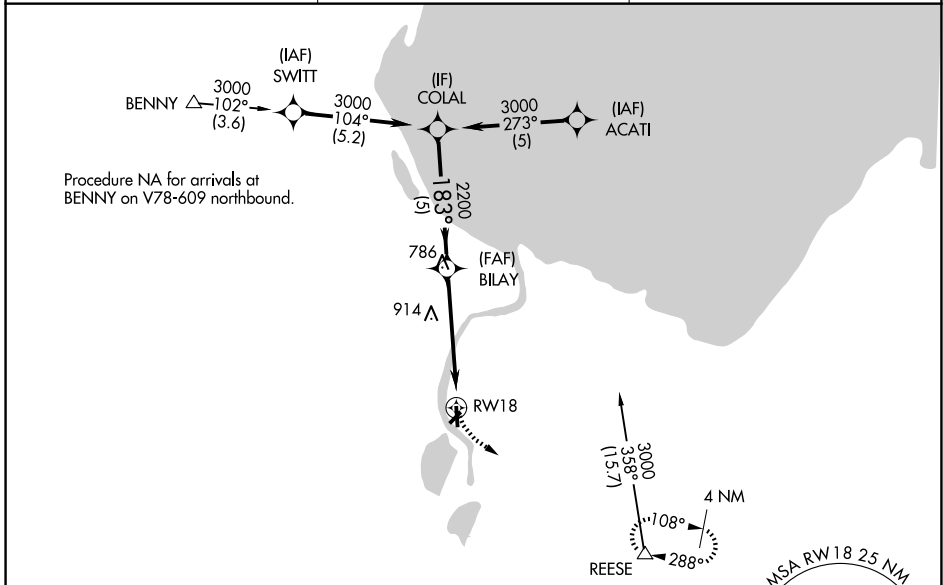
APP CRS	Rwy Ldg	<b>3798</b>
<b>183°</b>	TDZE	<b>585</b>
	Apt Elev	<b>585</b>

# RNAV (GPS) RWY 18

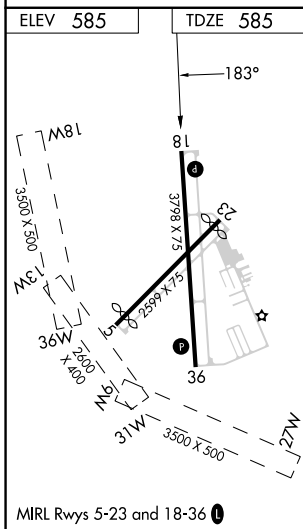
JAMES CLEMENTS MUNI (3CM)

RNP APCH - GPS.	<p><b>▼</b> Circling NA to Rwys 18W, 36W, 13W, 31W, 9W and 27W.  <b>▲</b> Circling NA southeast of Rwys 23 and 36. Rwy 18 helicopter visibility reduction below 1 SM NA. Use Saginaw County H W Browne altimeter setting. Procedure NA at night.</p>	MISSED APPROACH: Climbing left turn to 3000 direct REESE and hold.
-----------------	--	--

HYX AWOS-3P <b>118.325</b>	GREAT LAKES APP CON ★ <b>120.95 235.625</b>	UNICOM <b>122.725 (CTAF) 0</b>
-------------------------------	--	-----------------------------------



Procedure NA for arrivals at BENNY on V78-609 northbound.



ELEV 585 TDZE 585

	COLAL	VGSi and descent angles not coincident (VGSi Angle 4.00/TCH 27).		3000	REESE
	3000	BILAY	2200	RWY 18	
	5 NM		5 NM		
	2.96° TCH 45				
CATEGORY	A	B	C	D	
LNAV MDA	1260-1	675 (700-1)	1260-2 675 (700-2)	NA	
CIRCLING	1260-1	675 (700-1)	1260-2 675 (700-2)	NA	

EC-1, 11 JUN 2026 to 09 JUL 2026

EC-1, 11 JUN 2026 to 09 JUL 2026