

APP CRS	Rwy Ldg	<b>4899</b>
<b>083°</b>	TDZE	<b>634</b>
	Apt Elev	<b>634</b>

# RNAV (GPS) RWY 8

GRIFFITH-MERRILLVILLE (Ø5C)

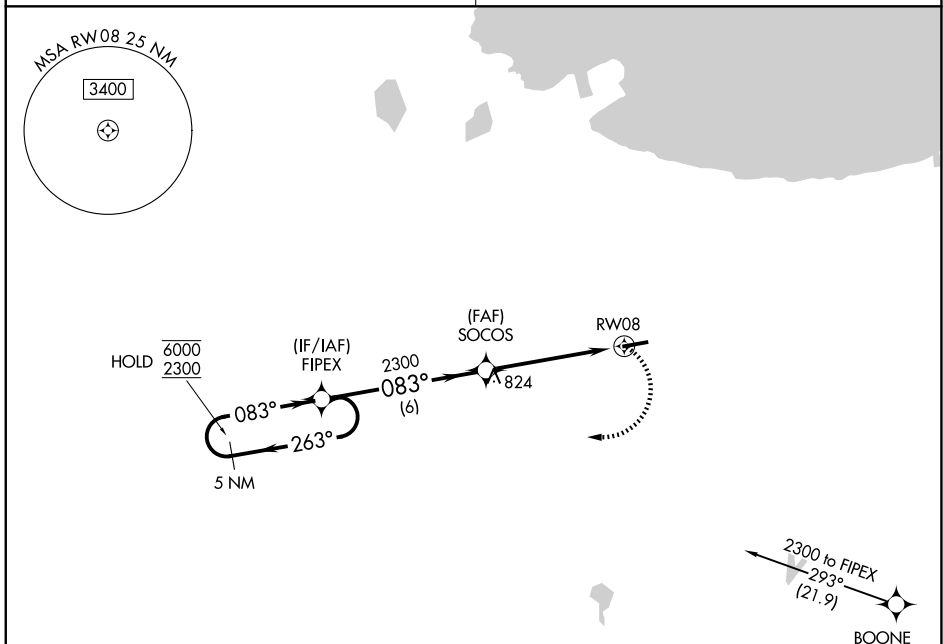
RNP APCH - GPS

▼ Procedure NA at night. Obtain local altimeter setting on CTAF; when not received, use Chicago Midway Intl altimeter setting and increase all MDAs 60 feet. Rwy 8 helicopter visibility reduction below 1 SM NA.

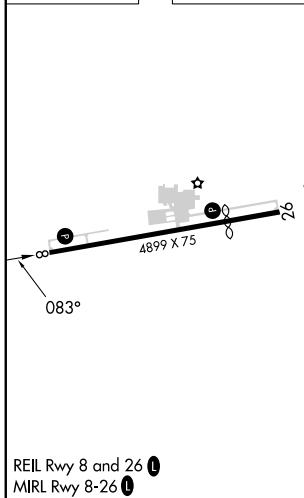
MISSED APPROACH: Climbing right turn to 2300 direct FIPEX and hold.

CHICAGO APP CON  
**133.1 285.6**

UNICOM  
**123.0 (CTAF) 0**



ELEV 634	TDZE 634
----------	----------



5 NM Holding Pattern		VGSi and descent angles not coincident (VGSi Angle 3.50/TCH 44).		2300	FIPEX
6000 2300		← 263°	→ 083°	2300	SOCOS
				3.04°	TCH 41
		6 NM		5 NM	
CATEGORY	A	B	C	D	
LNAY MDA	1080-1	446 (500-1)	NA		
CIRCLING	1200-1	566 (600-1)	NA		

GRIFFITH, INDIANA  
Orig-C 16MAY24

41°31'N-87°24'W

# GRIFFITH-MERRILLVILLE (Ø5C) RNAV (GPS) RWY 8

EC-2, 11 JUN 2026 to 09 JUL 2026

EC-2, 11 JUN 2026 to 09 JUL 2026