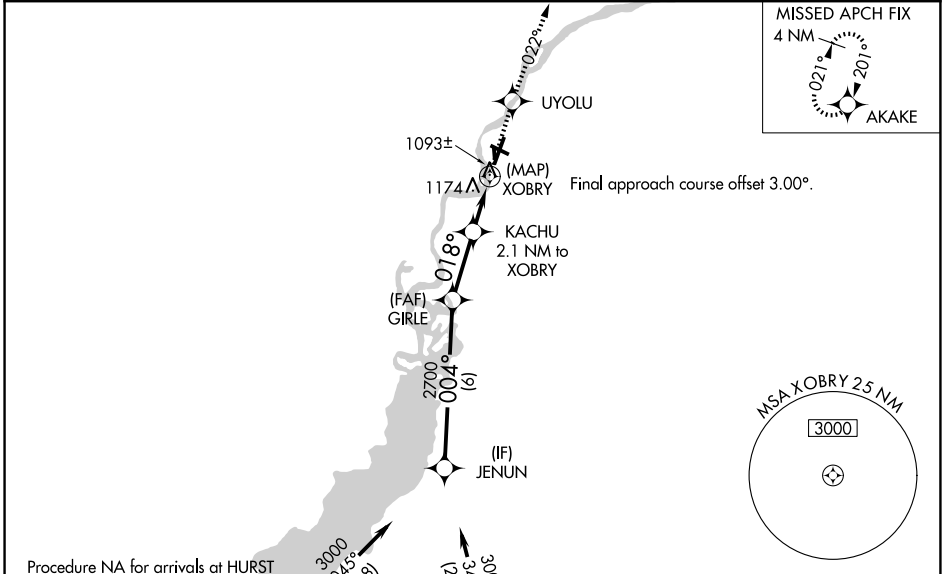


WAAS CH 77731 W02A	APP CRS 018°	Rwy Ldg TDZE Apt Elev	5500 1018 1021
--	------------------------	-----------------------------	---

RNAV (GPS) RWY 2

ALEXANDER FLD SOUTH WOOD COUNTY (ISW)

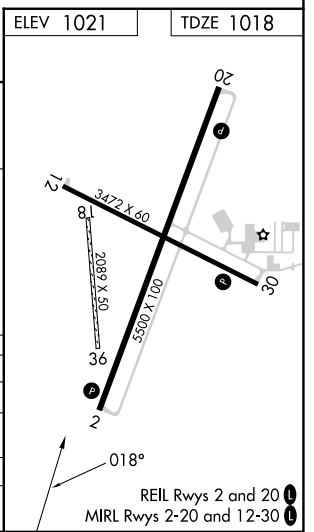
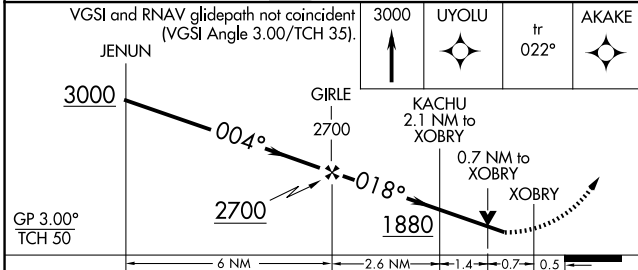
RNP APCH - GPS.		MISSED APPROACH: Climb to 3000 direct UYOLU and on track 022° to AKAKE and hold.
ASOS 126.575	MINNEAPOLIS CENTER 124.4 317.7	UNICOM 122.8 (CTAF) 0



Procedure NA for arrivals at HURST on V345 southeast bound.

(IAF) HURST

(IAF) ZAVOX



CATEGORY	A	B	C	D
LPV DA	1298-1		280 (300-1)	
LNAV/VNAV DA	1493-1 $\frac{3}{8}$		475 (500-1 $\frac{5}{8}$)	
LNAV MDA	1440-1	422 (500-1)	1440-1 $\frac{1}{4}$	422 (500-1 $\frac{1}{4}$)
CIRCLING	1480-1 459 (500-1)	1560-1 539 (600-1)	1740-2 719 (800-2)	1800-2 $\frac{1}{2}$ 779 (800-2 $\frac{1}{2}$)

EC-3, 11 JUN 2026 to 09 JUL 2026

EC-3, 11 JUN 2026 to 09 JUL 2026