

| | | | |
|--|------------------------|-----------------------------|---|
| WAAS CH 49228 W05A | APP CRS 050° | Rwy Ldg TDZE Apt Elev | 3741 1041 1041 |
|--|------------------------|-----------------------------|---|

RNAV (GPS) RWY 5

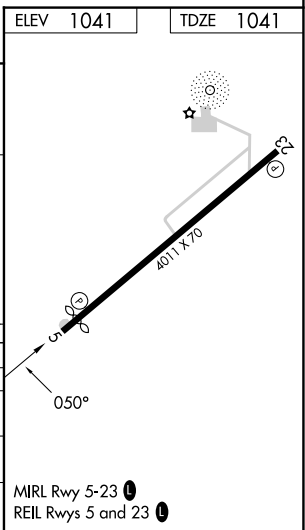
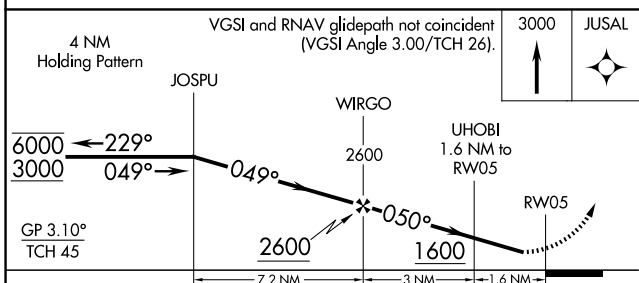
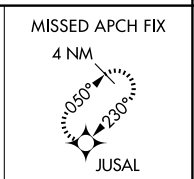
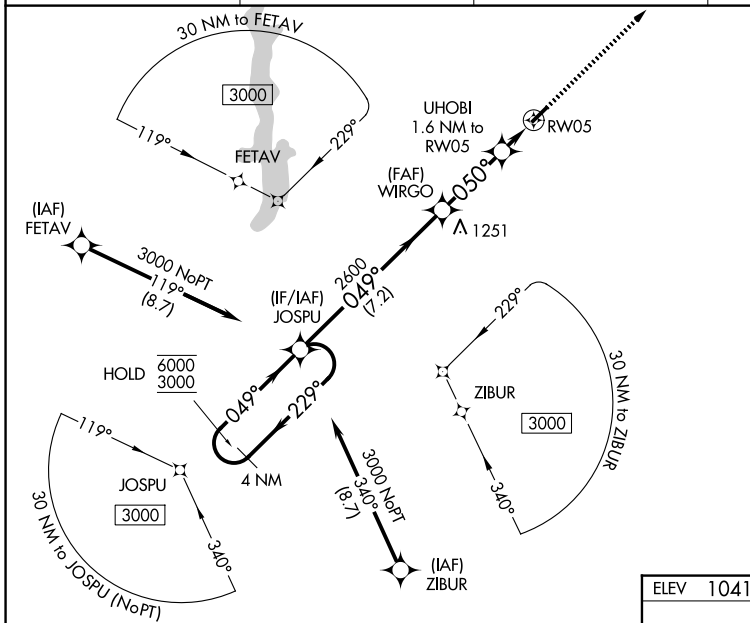
MIAMI UNIVERSITY (OXD)

RNP APCH - GPS.

⚠ Baro-VNAV NA when using CVG altimeter setting. Rwy 5 helicopter visibility reduction below 1 SM NA. For uncompensated Baro-VNAV systems, LNAV/VNAV NA below -17°C or above 54°C. When local altimeter setting not received, use CVG altimeter setting: increase LPV DA to 1393; increase LNAV/VNAV DA to 1419; increase all MDA 100 feet and visibility LNAV Cat C 3/8 SM.

MISSED APPROACH:
Climb to 3000 direct JUSAL and hold.

| | | | |
|----------------------------|---|-------------------------------|-----------------------|
| AWOS-3PT 118.625 | CINCINNATI APP CON 121.0 254.25 | UNICOM 122.8 (CTAF) | 122.9 0 |
|----------------------------|---|-------------------------------|-----------------------|



| CATEGORY | A | B | C | D |
|--------------|-----------------------|-----------------------|-------------------------|----|
| LPV DA | 1304-1 | 263 (300-1) | | NA |
| LNAV/VNAV DA | 1330-1 | 289 (300-1) | | NA |
| LNAV MDA | 1420-1 | 379 (400-1) | | NA |
| CIRCLING | 1460-1 419 (500-1) | 1600-1 559 (600-1) | 1600-1½ 559 (600-1½) | NA |

EC-2, 11 JUN 2026 to 09 JUL 2026

EC-2, 11 JUN 2026 to 09 JUL 2026