

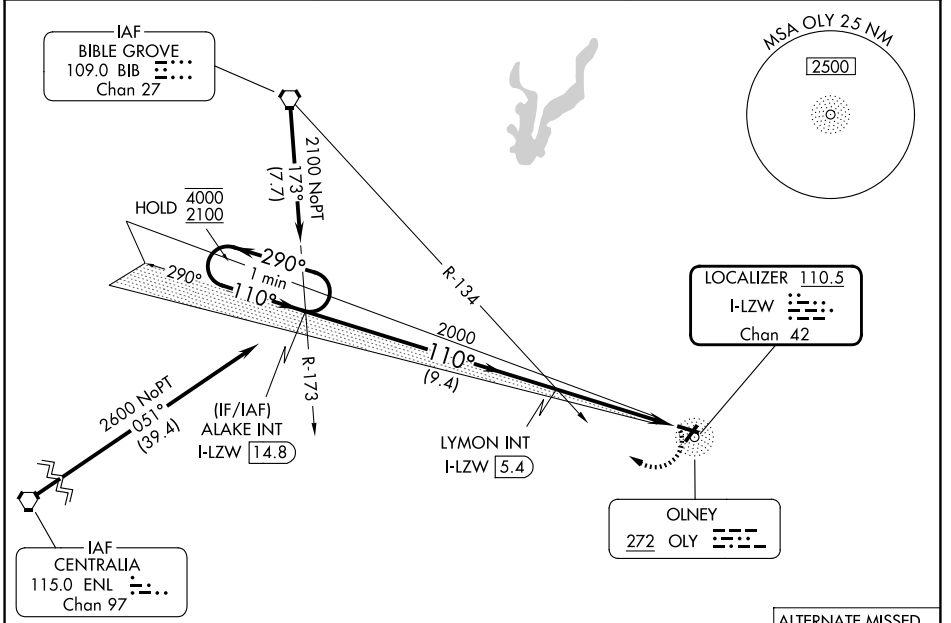
LOC/DME I-LZW 110.5 Chan 42	APP CRS 110°	Rwy Ldg TDZE Apt Elev 4099 482 482
---	------------------------	--

LOC RWY 11

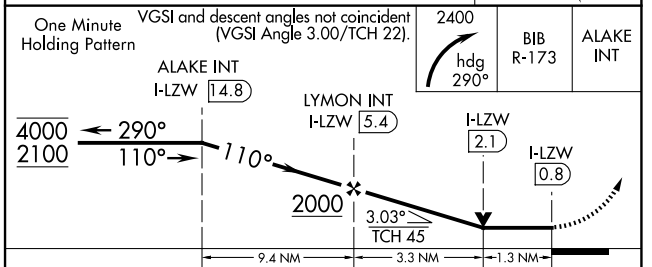
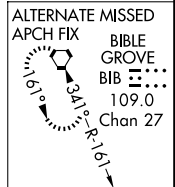
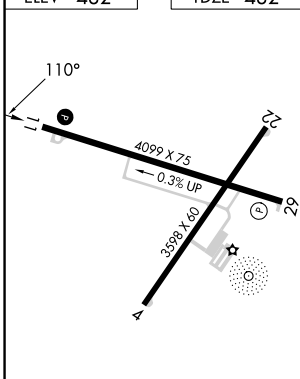
OLNEY-NOBLE (OLY)

<p>AWOS-3 119.275</p>	<p>KANSAS CITY CENTER 124.3 269.15</p>	<p>UNICOM 123.0 (CTAF)</p>
---	--	--

MISSED APPROACH: Climbing right turn to 2400 on heading 290° and BIB VORTAC R-173 to ALAKE INT/I-LZW LOC/DME 14.8 DME and hold.



ELEV 482	TDZE 482
----------	----------



FAF to MAP 4.6 NM					
Knots	60	90	120	150	180
Min:Sec	4:36	3:04	2:18	1:50	1:32

CATEGORY	A	B	C	D
S-11	920-1	438 (500-1)	920-1¼	438 (500-1¼)
CIRCLING	920-1	438 (500-1)	960-1½	1180-2¼
		458 (500-1)	478 (500-1½)	698 (700-2¼)

EC-3, 11 JUN 2026 to 09 JUL 2026

EC-3, 11 JUN 2026 to 09 JUL 2026