

|               |         |          |      |
|---------------|---------|----------|------|
| LOC/DME I-SME | APP CRS | Rwy Ldg  | 5287 |
| 109.3         | 048°    | TDZE     | 927  |
| Chan 30       |         | Apt Elev | 927  |

# ILS or LOC RWY 5

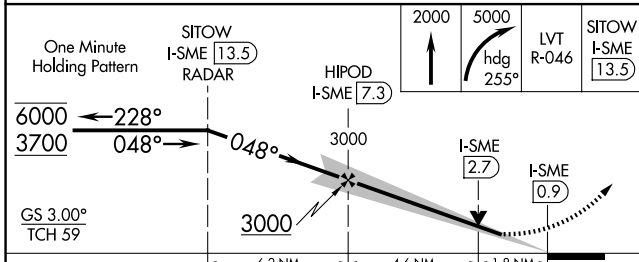
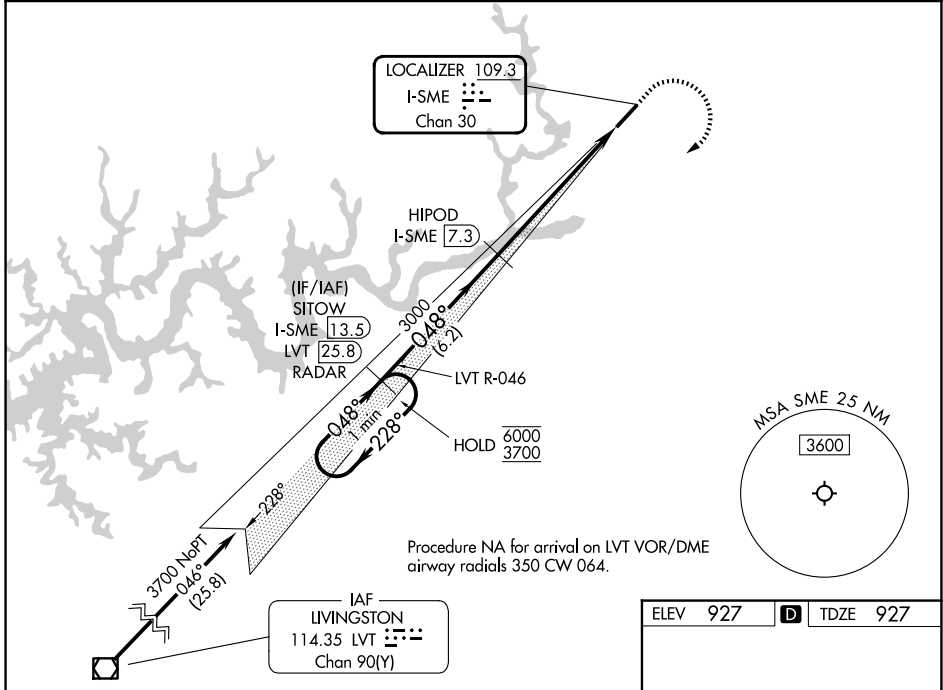
LAKE CUMBERLAND RGNL (SME)

**DME required.**

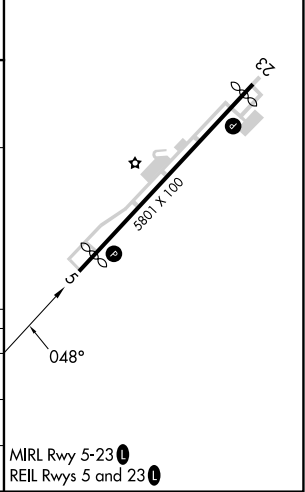
**⚠** Rwy 5 helicopter visibility reduction below 3/4 SM NA. VDP NA when using EKQ altimeter setting. When local altimeter setting not received, use EKQ altimeter setting and increase S-ILS 5 DA to 1526 feet and all visibilities 1/2 SM; increase all MDAs 60 feet and S-LOC 5 visibility Cat C/D 1/2 SM, and Circling visibility Cat B 1/2 SM. GS unusable for coupled approach below 1620.

**MISSED APPROACH:** Climb to 2000 then climbing right turn to 5000 on heading 255° and on LVT VOR/DME R-046 to SITOW/13.5 DME/RADAR and hold, continue climb-in-hold to 5000.

|                  |  |                                 |
|------------------|--|---------------------------------|
| AWOS-3<br>120.05 | INDIANAPOLIS CENTER<br>124.625 371.925 | UNICOM<br>122.8 (CTAF) <b>0</b> |
|------------------|--|---------------------------------|



|          |          |          |
|----------|----------|----------|
| ELEV 927 | <b>D</b> | TDZE 927 |
|----------|----------|----------|



| CATEGORY | A                     | B                     | C            | D               |
|----------|-----------------------|-----------------------|--------------|-----------------|
| S-ILS 5  | 1482-1 1/8            |                       | 555 (600-1%) |                 |
| S-LOC 5  | 1540-1                | 613 (700-1)           | 1540-1 3/4   | 613 (700-1 3/4) |
| CIRCLING | 1580-1<br>653 (700-1) | 1700-1<br>773 (800-1) | 2100-3       | 1173 (1200-3)   |

SE-1, 11 JUN 2026 to 09 JUL 2026

SE-1, 11 JUN 2026 to 09 JUL 2026