

WAAS CH <b>50236</b> <b>W13A</b>	APP CRS <b>126°</b>	Rwy Ldg TDZE Apt Elev	<b>5007</b> <b>975</b> <b>975</b>
--	------------------------	-----------------------------	---

# RNAV (GPS) RWY 13

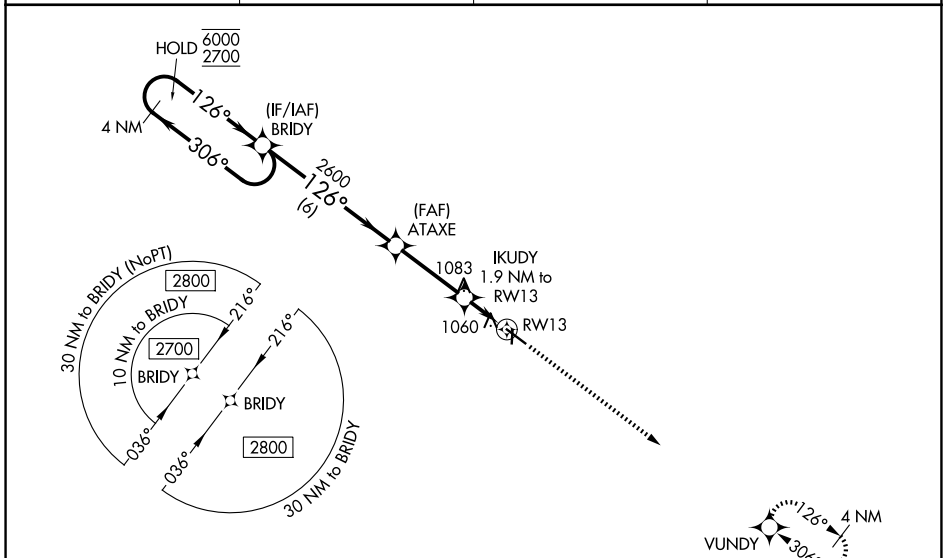
MARSHALLTOWN MUNI (MIW)

RNP APCH - GPS.

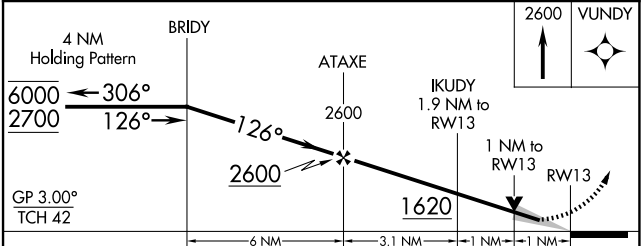
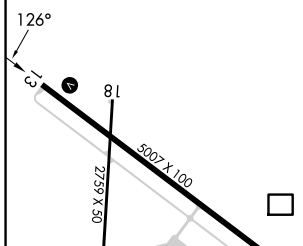
**⚠** Baro-VNAV and VDP NA when using GGI altimeter setting. Circling Rwy 18, 36 NA at night. For uncompensated Baro-VNAV systems, LNAV/VNAV NA below -21°C or above 54°C. When local altimeter setting not received, use GGI altimeter setting and increase LPV DA to 1289 feet and all visibilities ½ SM. Increase LNAV/VNAV DA to 1289 feet and all visibilities ½ SM. Increase all MDAs 80 feet and LNAV visibility Cat C/D ¼ SM, and Circling visibility Cat D ¼ SM.

MISSED APPROACH: Climb to 2600 direct VUNDY and hold.

ASOS <b>128.325</b>	DES MOINES APP CON * <b>120.9</b>	CLNC DEL <b>120.9</b>	UNICOM <b>122.8 (CTAF) 0</b>
------------------------	--------------------------------------	--------------------------	---------------------------------



ELEV 975	TDZE 975
----------	----------



CATEGORY	A	B	C	D
LPV DA		1225-¾	250 (300-¾)	
LNAV/VNAV DA		1225-¾	250 (300-¾)	
LNAV MDA		1320-1	345 (400-1)	
CIRCLING	1400-1 425 (500-1)	1440-1 465 (500-1)	1460-1½ 485 (500-1½)	1840-2¾ 865 (900-2¾)

MIRL Rwy 13-31 and 18-36 **0**  
REIL Rwy 13 and 31 **0**

NC-3, 11 JUN 2026 to 09 JUL 2026

NC-3, 11 JUN 2026 to 09 JUL 2026