

LOC/DME I-MAY 108.55 Chan 22 (Y)	APP CRS 070°	Rwy Ldg TDZE Apt Elev	5001 1307 1307
--	------------------------	-----------------------------	---

ILS or LOC RWY 7

WEXFORD COUNTY (CAD)

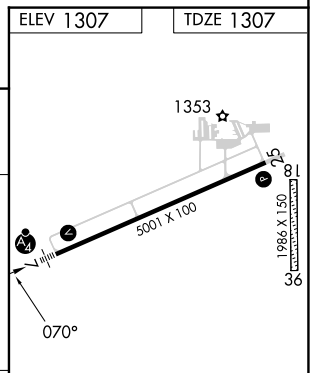
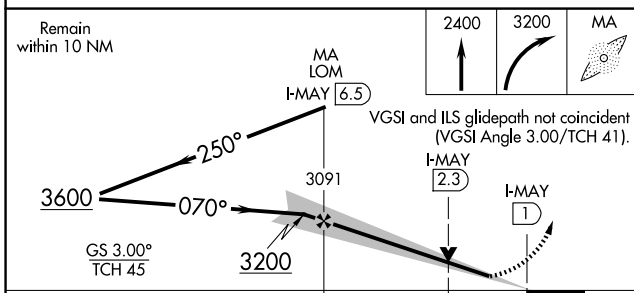
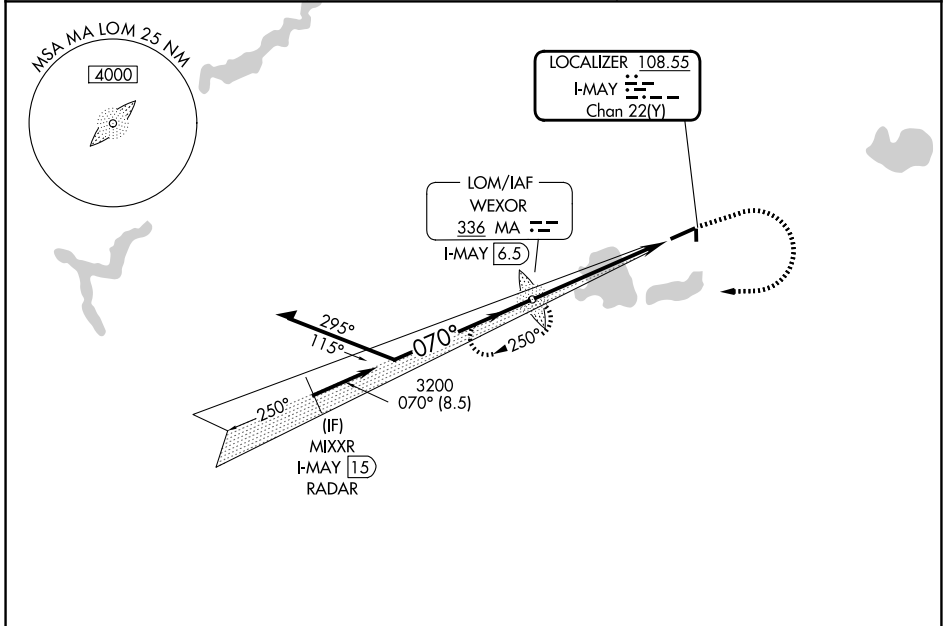
ADF required.
RADAR required for procedure entry.

MALSF

MISSED APPROACH: Climb to 2400 then climbing right turn to 3200 direct WEXOR. LOM/I-MAY 6.5 DME and hold.

NA Inop table does not apply to S-ILS 7 all Cats. Circling NA to Rwy 18 and 36. Rwy 7 helicopter visibility reduction below 3/4 SM NA. For inop ALS, increase S-LOC 7 Cat C/D visibility to 1 1/2 SM.

AWOS-3P 128.325	MINNEAPOLIS CENTER 132.9 338.3	UNICOM 122.8 (CTAF) 0
---------------------------	--	--



CATEGORY	A	B	C	D
S-ILS 7		1557-3/4	250 (300-3/4)	
S-LOC 7	1780-3/4	473 (500-3/4)	1780-1 1/8	473 (500-1 1/8)
CIRCLING	1820-1 513 (600-1)	1840-1 533 (600-1)	1860-1 1/2 553 (600-1 1/2)	2060-2 1/2 753 (800-2 1/2)

HIRL Rwy 7-25 0					
REIL Rwy 7 and 25 0					
FAF to MAP 5.5 NM					
Knots	60	90	120	150	180
Min:Sec	5:30	3:40	2:45	2:12	1:50

EC-1, 11 JUN 2026 to 09 JUL 2026

EC-1, 11 JUN 2026 to 09 JUL 2026