

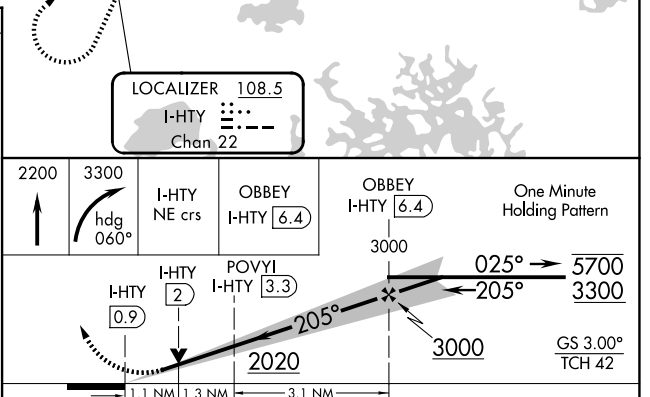
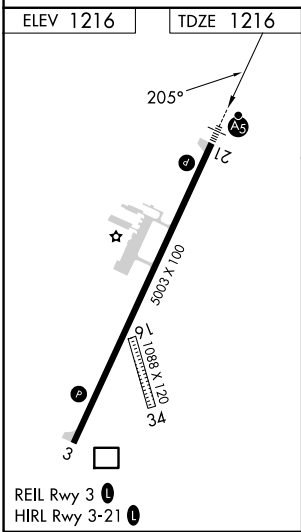
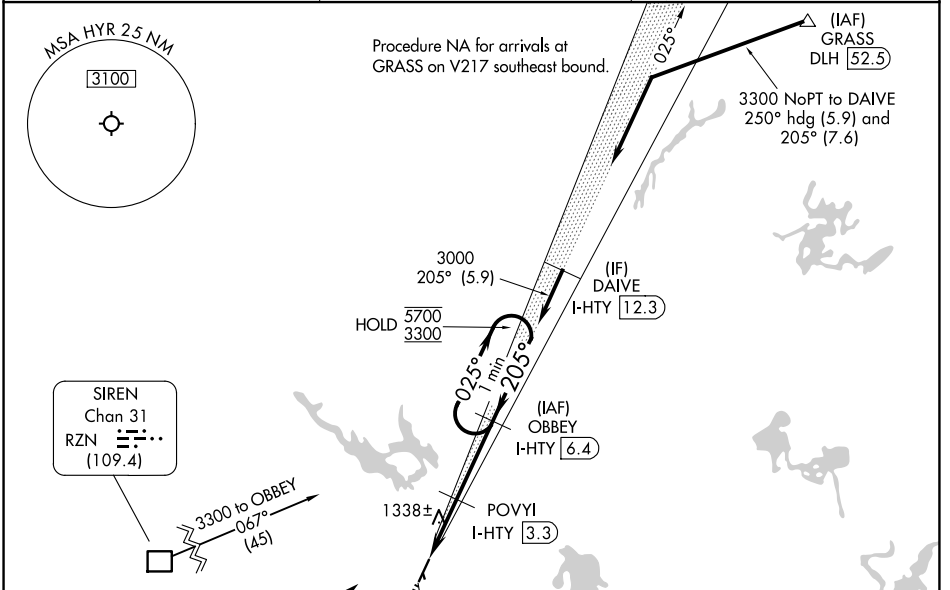
LOC/DME I-HTY <b>108.5</b> Chan <b>22</b>	APP CRS <b>205°</b>	Rwy Ldg TDZE Apt Elev	<b>5003</b> <b>1216</b> <b>1216</b>
---	------------------------	-----------------------------	---

# ILS or LOC RWY 21

SAWYER COUNTY (HYR)

RNP APCH-GPS. From RZN DME. DME required.	MALSR 	MISSED APPROACH: Climb to 2200 then climbing right turn to 3300 on heading 060° and I-HTY northeast course to OBBEY/I-HTY 6.4 DME and hold, continue climb-in-hold to 3300.
<p><b>NA</b> Circling NA to Rwy 16 and 34. Rwy 21 helicopter visibility reduction below 3/4 SM NA. For inop ALS, increase S-ILS 21 all Cats visibility to 7/8 SM; increase S-LOC 21 Cats A and B visibility to 1 SM, and Cats C and D visibility to 1 1/8 SM.</p>		

ASOS <b>118.4</b>	MINNEAPOLIS CENTER <b>126.45 276.4</b>	UNICOM <b>122.8 (CTAF)</b>
----------------------	---	-------------------------------



CATEGORY	A	B	C	D
S-ILS 21		1518-3/4	302 (400-3/4)	
S-LOC 21		1600-3/4	384 (400-3/4)	
CIRCLING	1860-1 644 (700-1)	2060-1 1/4 844 (900-1 1/4)	2120-2 3/4 904 (1000-2 3/4)	2120-3 904 (1000-3)

EC-3, 11 JUN 2026 to 09 JUL 2026

EC-3, 11 JUN 2026 to 09 JUL 2026