

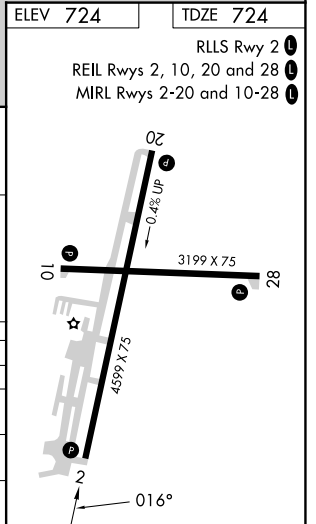
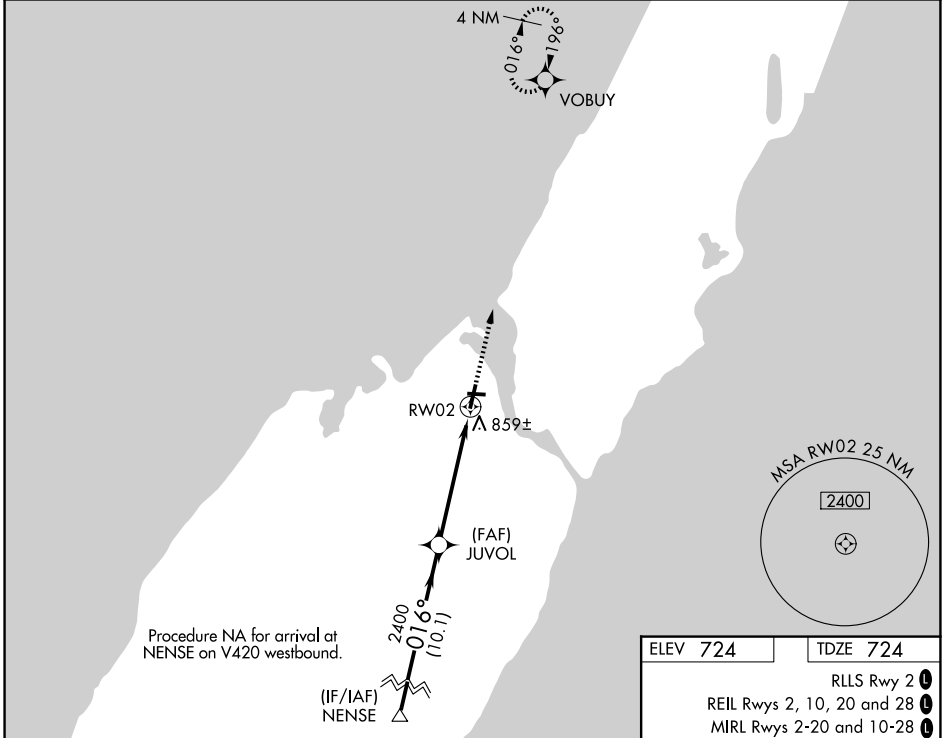
WAAS CH 81904 W02A	APP CRS 016°	Rwy Ldg 4599 TDZE 724 Apt Elev 724
--	------------------------	---

RNAV (GPS) RWY 2

DOOR COUNTY CHERRYLAND (SUE)

RNP APCH.	<p>▼ Rwy 2 helicopter visibility reduction below 3/4 SM NA. For uncompensated Baro-VNAV systems, LNAV/VNAV NA below -16°C or above 54°C.</p> <p>▲ MISSED APPROACH: Climb to 2600 direct VOBUY and hold.</p>
-----------	---

AWOS-3PT 128.325	GREEN BAY APP CON * 119.25 338.2	UNICOM 122.7(CTAF) 0
----------------------------	--	--------------------------------



	NENSE		JUVOL		RWY 2		VOBUY	
	3500		2400		2600		2600	
	016°		016°		016°		016°	
GP 3.00° TCH 40	10.1 NM		4 NM		1.1 NM		4 NM	
CATEGORY	A		B		C		D	
LPV DA	1013-1		289 (300-1)					
LNNAV/ VNAV DA	1164-1½		440 (500-1½)					
LNNAV MDA	1120-1		396 (400-1)		1120-1⅛		396 (400-1⅛)	
CIRCLING	1280-1		556 (600-1)		1280-1½		1340-2 616 (700-2)	

EC-3, 11 JUN 2026 to 09 JUL 2026

EC-3, 11 JUN 2026 to 09 JUL 2026