

WAAS CH <b>72731</b> <b>W19A</b>	APP CRS <b>194°</b>	Rwy Ldg TDZE Apt Elev	<b>3950</b> <b>733</b> <b>733</b>
--	------------------------	-----------------------------	---

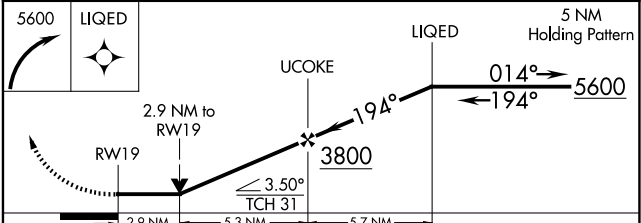
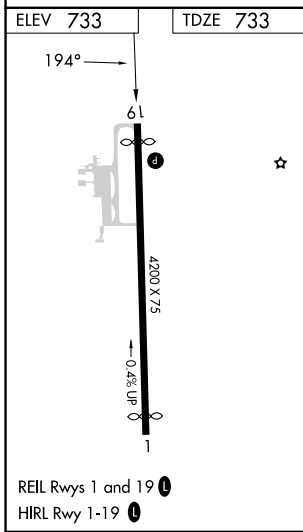
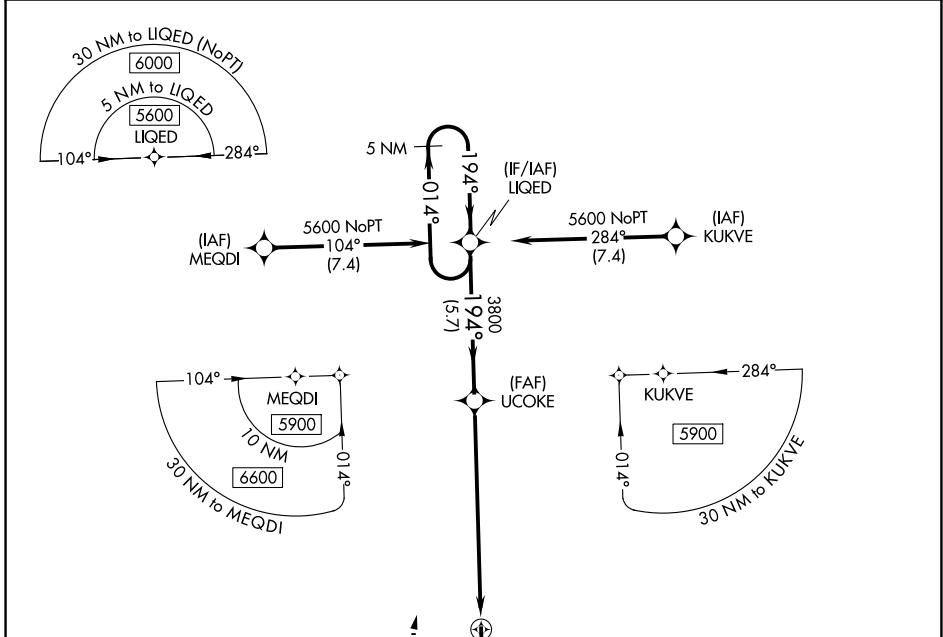
# RNAV (GPS) Y RWY 19

MORRISVILLE-STOWE STATE (MVL)

**⚠** Circling NA for Cat C E of Rwy 19. Rwy 19 helicopter visibility reduction below  $\frac{3}{4}$  SM NA. DME/DME RNP-0.3 NA. VDP NA when using Burlington altimeter setting. When local altimeter setting not received, use Burlington altimeter setting and increase all MDAs 120 feet.

**⚠** MISSED APPROACH: (Do not exceed 165K until LIQED) Climbing right turn to 5600 direct LIQED and hold, continue climb-in-hold to 5600.

ASOS <b>135.625</b>	BOSTON CENTER <b>135.7 282.2</b>	UNICOM <b>122.8 (CTAF) 0</b>
------------------------	-------------------------------------	---------------------------------



CATEGORY	A	B	C	D
LP MDA	1860-1¼ 1127 (1200-1¼)	1860-1½ 1127 (1200-1½)	1860-3 1127 (1200-3)	NA
LNAV MDA	2160-1¼ 1427 (1500-1¼)	2160-1½ 1427 (1500-1½)	2160-3 1427 (1500-3)	NA
CIRCLING	2160-1¼ 1427 (1500-1¼)	2160-1½ 1427 (1500-1½)	2160-3 1427 (1500-3)	NA

NE-1, 11 JUN 2026 to 09 JUL 2026

NE-1, 11 JUN 2026 to 09 JUL 2026