

| | | |
|---|------------------------|---|
| LOC/DME I-PQL 110.1 Chan 38 | APP CRS 168° | Rwy Ldg 6501 TDZE 17 Apt Elev 17 |
|---|------------------------|---|

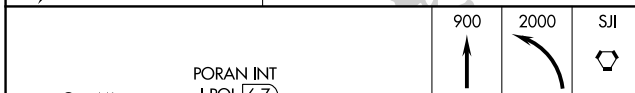
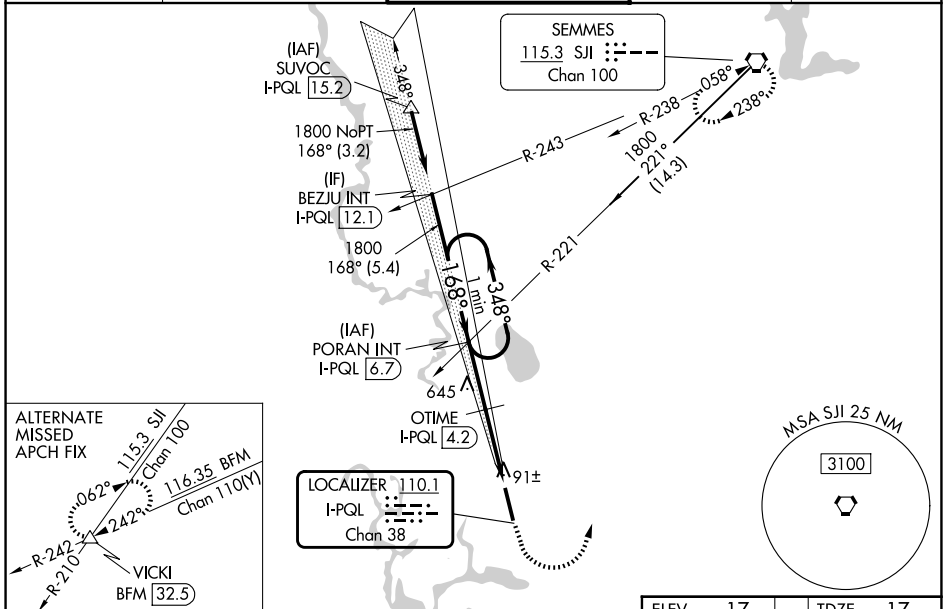
ILS or LOC RWY 17

TRENT LOTT INTL (PQL)

⚠ When local altimeter setting not received, use Mobile Rgnl altimeter setting and increase DA to 292 feet; increase all MDA 80 feet and S-LOC 17 visibility Cat B ¼ SM, increase Circling visibility Cats B and C ¼ SM. OTIME Fix Minimums, increase S-LOC 17 visibility Cats C and D ½ SM and Circling Cats C and D ½ SM. For inop ALS when using Mobile Rgnl altimeter setting increase S-ILS all Cats visibility to ½ SM.

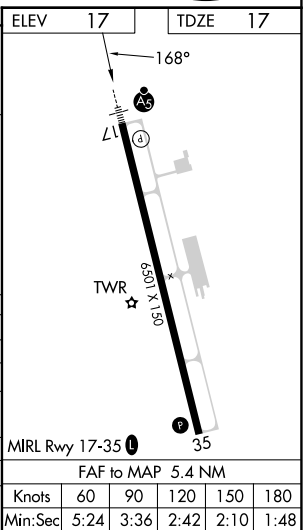
MALSR
MISSED APPROACH: Climb to 900 then climbing left turn to 2000 direct SJI VORTAC and hold.

| | | | | |
|------------------------|---------------------------------------|---|---------------------------|------------------------|
| ATIS 135.175 | MOBILE APP CON★ 121.0 307.1 | TRENT LOTT TOWER★ 118.575 (CTAF) 0 | GND CON 121.725 | UNICOM 122.8 |
|------------------------|---------------------------------------|---|---------------------------|------------------------|



| | | |
|--|------|-----|
| 900 | 2000 | SJI |
| ↑ | ↻ | ⬡ |
| #980 when using Mobile Rgnl altimeter setting. | | |

| | | | | |
|--------------------|-------------------|--------------|-------------|--------------|
| ELEV | 17 | TDZE | 17 | |
| GS 3.00° | TCH 50 | | | |
| CATEGORY | A | B | C | D |
| S-ILS 17 | 217-½ 200 (200-½) | | | |
| S-LOC 17 | 900-¾ | 883 (900-¾) | 900-2 | 883 (900-2) |
| CIRCLING | 900-1¼ | 883 (900-1¼) | 900-2¾ | 883 (900-2¾) |
| | | | 883 (900-3) | |
| OTIME FIX MINIMUMS | | | | |
| S-LOC 17 | 360-½ | 343 (400-½) | 360-¾ | 343 (400-¾) |
| CIRCLING | 480-1 | 680-1 | 680-1¾ | 680-2 |
| | 463 (500-1) | 663 (700-1) | 663 (700-¾) | 663 (700-2) |



SC-4, 11 JUN 2026 to 09 JUL 2026

SC-4, 11 JUN 2026 to 09 JUL 2026