

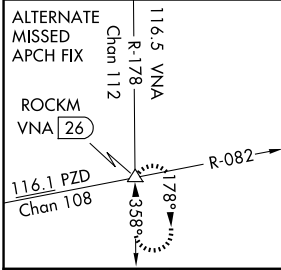
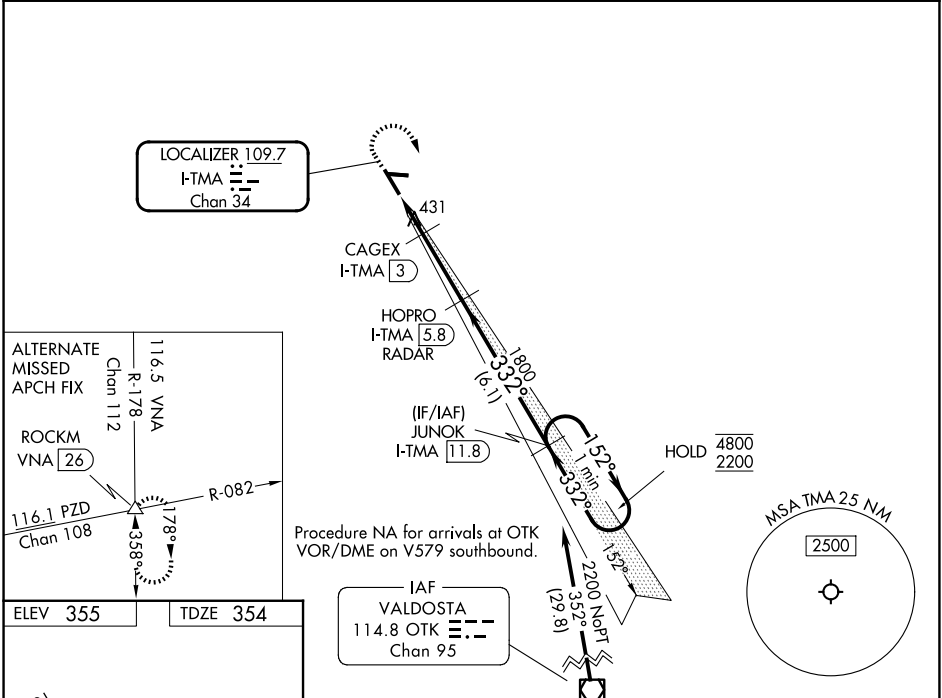
LOC/DME I-TMA 109.7 Chan 34	APP CRS 332°	Rwy Ldg TDZE Apt Elev	6506 354 355
---	------------------------	-----------------------------	---

ILS or LOC RWY 34

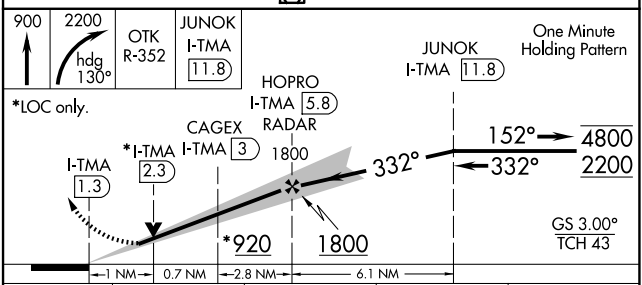
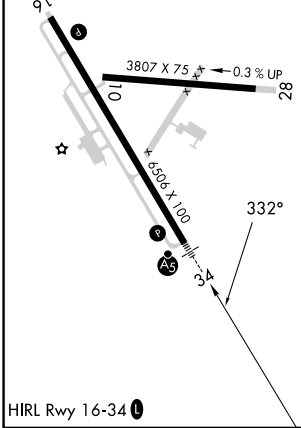
HENRY TIFT MYERS (TMA)

DME required.	MALSR 	MISSED APPROACH: Climb to 900 then climbing right turn to 2200 on heading 130° and OTK VOR/DME R-352 to JUNOK/I-TMA 11.8 DME and hold.
<p> Circling Rwy 10 NA at night. Rwy 34 helicopter visibility reduction below 3/4 SM NA. For inop ALS, increase S-ILS 34 visibility all Cats to 7/8 SM and increase S-LOC 34 visibility all Cats to 1 SM.</p>		

AWOS-3PT 118.525	VALDOSTA APP CON ★ 126.6 285.6	UNICOM 122.7 (CTAF) 0
----------------------------	--	---------------------------------



ELEV 355	TDZE 354
----------	----------



One Minute Holding Pattern	JUNOK I-TMA 11.8			
*LOC only.	HOPRO I-TMA 5.8 RADAR			
	CAGEX I-TMA 3			
	I-TMA 1.3			
	*I-TMA 2.3			
	*920			
	1800			
	1800			
	332°			
	152°			
	4800			
	2200			
	GS 3.00°			
	TCH 43			
	1 NM 0.7 NM 2.8 NM 6.1 NM			
CATEGORY	A	B	C	D
S-ILS 34		623-3/4	269 (300-3/4)	
S-LOC 34		700-3/4	346 (400-3/4)	
CIRCLING	920-1 565 (600-1)	1060-1 705 (800-1)	1060-2 705 (800-2)	1240-3 885 (900-3)

SE-4, 11 JUN 2026 to 09 JUL 2026

SE-4, 11 JUN 2026 to 09 JUL 2026