

VOR/DME H ^{UO}	APP CRS	Rwy Idg	3358
116.1	039°	TDZE	548
Chan 108		Apt Elev	548

VOR/DME or GPS RWY 5

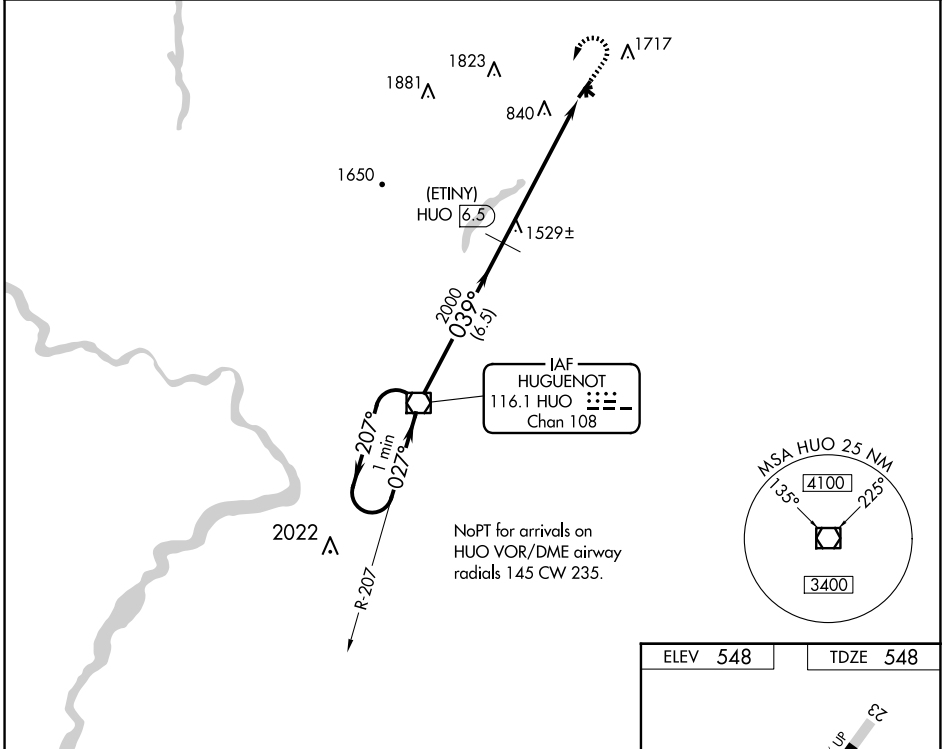
WURTSBORO/SULLIVAN COUNTY (N82)

▼ Obtain local altimeter setting on CTAF, when not received, procedure NA. Procedure not authorized at night. Circling Cat B/C NA north of Rwy 9/27. Helicopter visibility reduction below 1 SM NA.

MISSED APPROACH: Climb to 2300 then climbing left turn to 3500 direct H^{UO} VOR/DME and hold.

NEW YORK APP CON
132.75 363.1

UNICOM
122.8 (CTAF)



NE-2, 11 JUN 2026 to 09 JUL 2026

NE-2, 11 JUN 2026 to 09 JUL 2026

ELEV 548	TDZE 548
-----------------	-----------------

