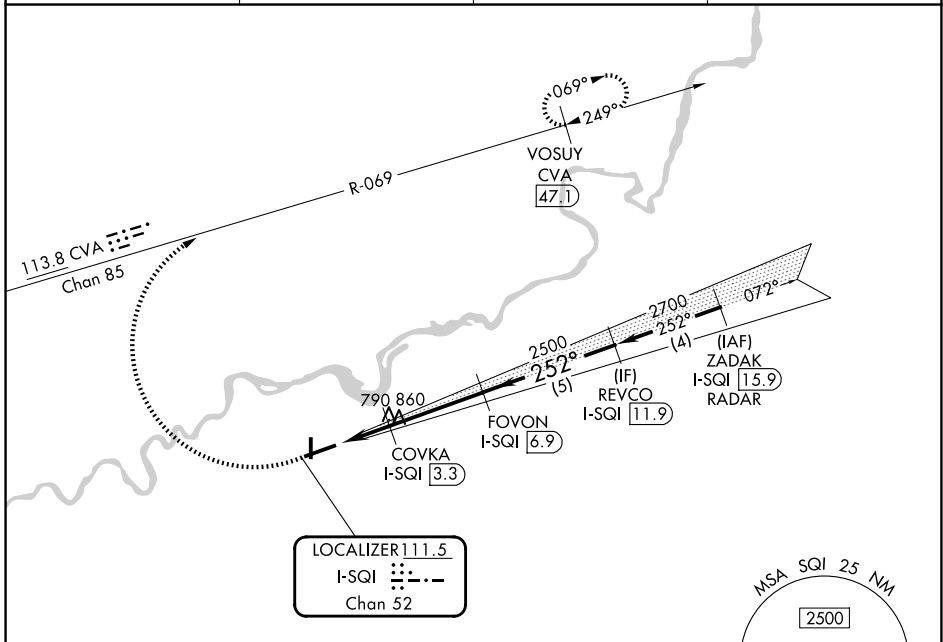


LOC/DME I-SQI 111.5 Chan 52	APP CRS 252°	Rwy Ldg TDZE Apt Elev 6499 647 648
--	------------------------	--

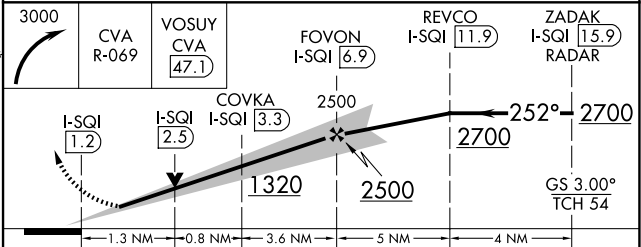
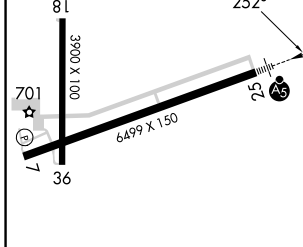
ILS or LOC RWY 25

WHITESIDE COUNTY/JOS H BITTORF FLD (SQI)

DME required. Radar required for procedure entry.		MALSR	MISSED APPROACH: Climbing right turn to 3000 on CVA VORTAC R-069 to VOSUY/CVA 47.1 DME and hold.	
AWOS-3PT 119.175	ROCKFORD APP CON 126.0 327.0	CLNC DEL 128.0	UNICOM 123.0 (CTAF) 0	



ELEV 648	TDZE 647
----------	----------



	HIRL Rwy 7-25 0				
	MIRL Rwy 18-36 0				
	REIL Rwy 7, 18 and 36 0				
FAF to MAP 5.7 NM					
Knots	60	90	120	150	180
Min:Sec	5:42	3:48	2:51	2:17	1:54
CATEGORY	A	B	C	D	
S-ILS 25	847-1/2 200 (200-1/2)				
S-LOC 25	1100-1/2 453 (500-1/2)		1100-7/8 453 (500-7/8)		
CIRCLING	1140-1 492 (500-1)		1160-1 1/2 512 (600-1 1/2)		1480-2 3/4 832 (900-2 3/4)

EC-3, 11 JUN 2026 to 09 JUL 2026

EC-3, 11 JUN 2026 to 09 JUL 2026