

LOC I-OSU <b>108.5</b>	APP CRS <b>092°</b>	Rwy Ldg TDZE Apt Elev	<b>5004</b> <b>906</b> <b>906</b>
---------------------------	------------------------	-----------------------------	---

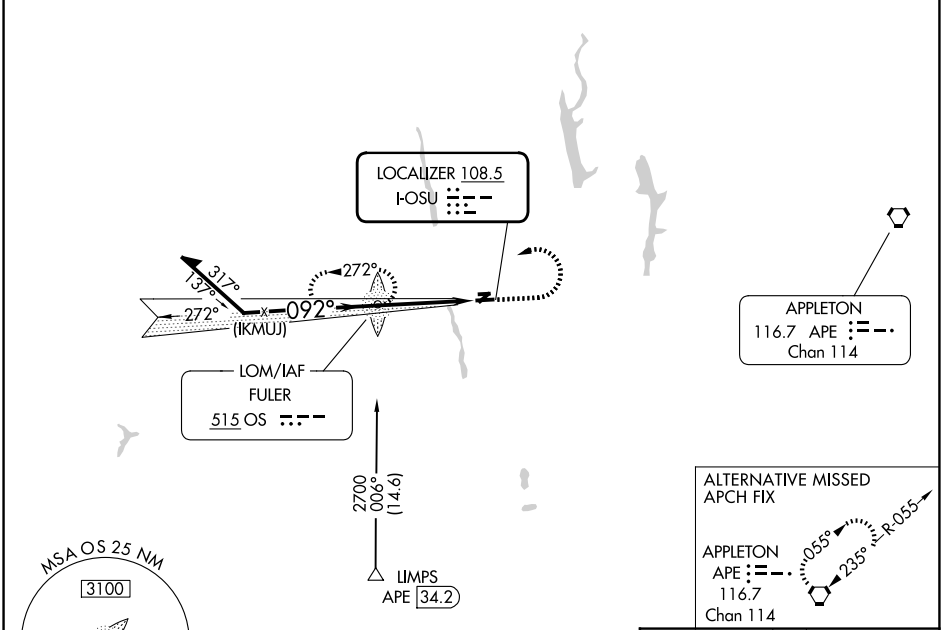
# ILS or LOC RWY 9R

OHIO STATE UNIVERSITY (OSU)

**⚠** Circling Rwy 23 NA at night. For inop ALS, increase S-LOC-9 Cat C and D visibility to 1 3/8 SM.

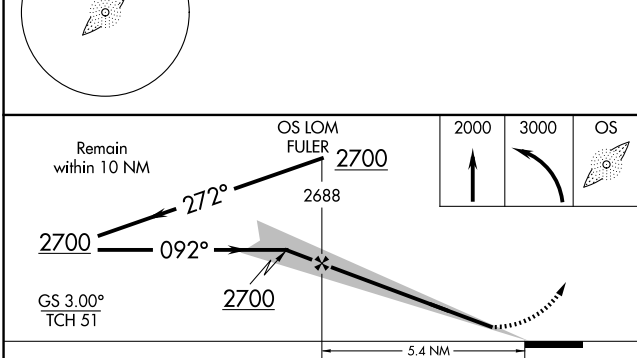
**MALSRL** **AS** MISSED APPROACH: Climb to 2000 then climbing left turn to 3000 direct FULER LOM and hold, continue climb-in-hold to 3000.

ATIS <b>121.35</b>	COLUMBUS APP CON <b>125.95 317.775</b>	STATE TOWER ★ <b>118.8 (CTAF) 254.325</b>	GND CON <b>121.7</b>	UNICOM <b>122.95</b>
-----------------------	---	--	-------------------------	-------------------------

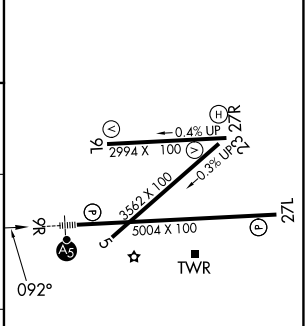


EC-2, 11 JUN 2026 to 09 JUL 2026

EC-2, 11 JUN 2026 to 09 JUL 2026



ELEV 906	<b>D</b> TDZE 906
----------	-------------------



CATEGORY	A	B	C	D
S-ILS 9R	1106-1/2 200 (200-1/2)			
S-LOC 9R	1420-1/2	514 (600-1/2)	1420-1	514 (600-1)
CIRCLING	1420-1	514 (600-1)	1420-1 1/2	1680-2 1/2
			514 (600-1 1/2)	774 (800-2 1/2)

REIL Rwy 27L					
HIRL Rwy 9R-27L					
MIRL Rwy 9L-27R					
FAF to MAP 5.4 NM					
Knots	60	90	120	150	180
Min:Sec	5:24	3:36	2:42	2:10	1:48