

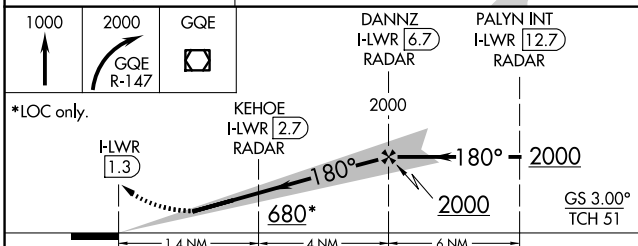
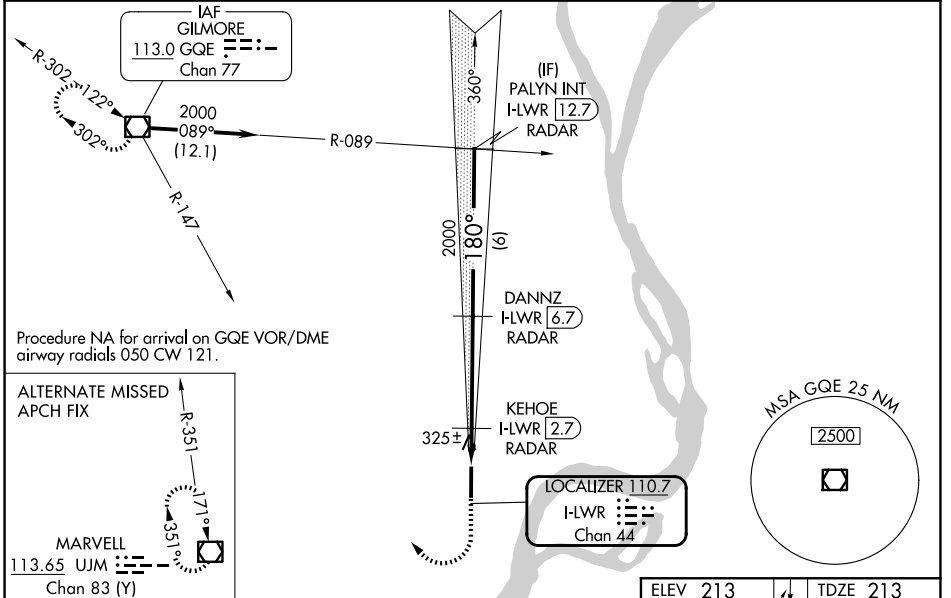
LOC/DME I-LWR 110.7 Chan 44	APP CRS 180°	Rwy Ldg 6003 TDZE 213 Apt Elev 213
---	------------------------	---

ILS or LOC RWY 17

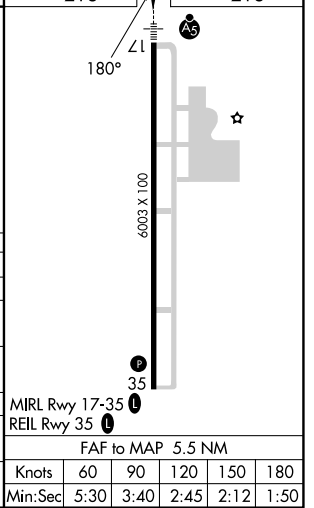
WEST MEMPHIS MUNI (A W M)

DME or RADAR required.	MALSR
<p>NA For inop ALS, increase S-LOC 17 Cat C/D visibility to 1½ SM and KEHOE FIX MINIMUMS S-LOC 17 Cats C/D visibility to 1 SM.</p>	<p>MISSED APPROACH: Climb to 1000 then climbing right turn to 2000 on GQE VOR/DME R-147 to GQE VOR/DME and hold.</p>

ASOS 118.175	MEMPHIS APP CON 119.1 291.6	CLNC DEL 121.7	UNICOM 123.05 (CTAF) L
------------------------	---------------------------------------	--------------------------	---



CATEGORY	A	B	C	D
S-ILS 17	413-½ 200 (200-½)			
S-LOC 17	680-½ 467 (500-½)		680-1 467 (500-1)	
CIRCLING	680-1 467 (500-1)	740-1 527 (600-1)	800-1½ 587 (600-1½)	920-2¼ 707 (800-2¼)
KEHOE FIX MINIMUMS				
S-LOC 17	580-½ 367 (400-½)		580-5/8 367 (400-5/8)	
CIRCLING	640-1 427 (500-1)	740-1 527 (600-1)	800-1½ 587 (600-1½)	920-2¼ 707 (800-2¼)



ELEV 213	TDZE 213
MIRL Rwy 17-35 L	REIL Rwy 35 L
FAF to MAP 5.5 NM	
Knots	60 90 120 150 180
Min:Sec	5:30 3:40 2:45 2:12 1:50

SC-1, 11 JUN 2026 to 09 JUL 2026

SC-1, 11 JUN 2026 to 09 JUL 2026