

LOC I-TXP <b>109.95</b>	APP CRS <b>249°</b>	Rwy Ldg TDZE Apt Elev	<b>6001</b> <b>1039</b> <b>1062</b>
----------------------------	------------------------	-----------------------------	---

**ILS or LOC RWY 25**  
GWINNETT COUNTY/BRISCOE FLD (LZU)

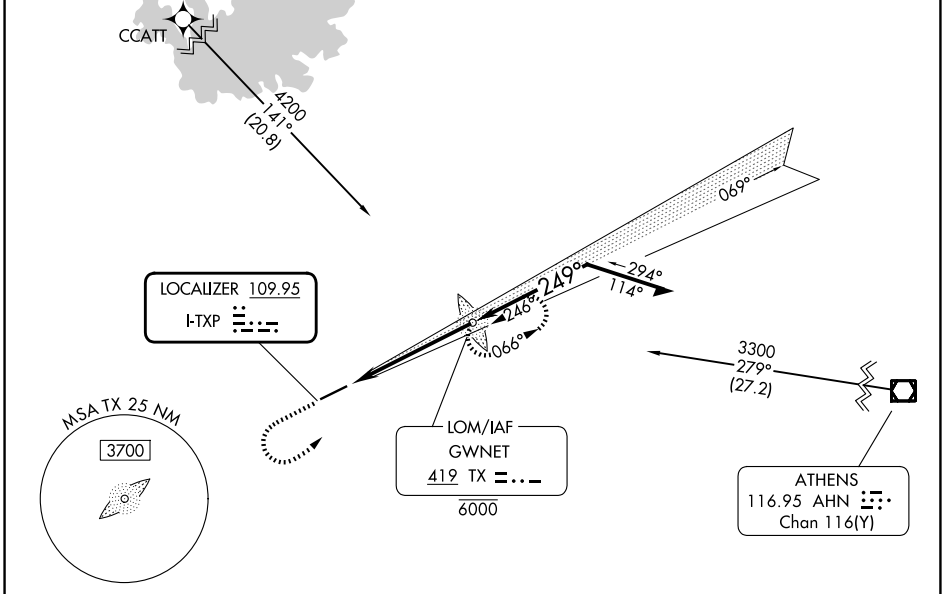
RNAV 1 - GPS. From CCATT.  
ADF required.

MALS R

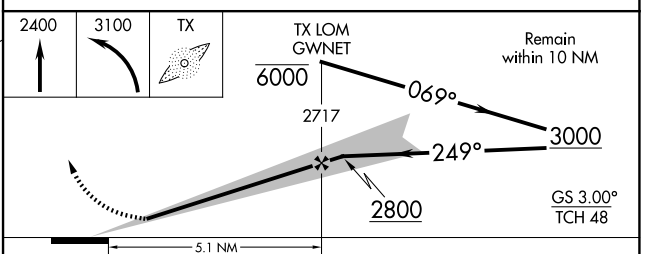
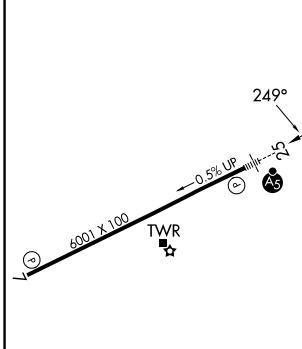
MISSED APPROACH: Climb to 2400 then climbing left turn to 3100 direct GWNENT LOM and hold.

Inop table does not apply to S-ILS 25. Autopilot coupled approach NA below 1700. Rwy 25 helicopter visibility reduction below 3/4 SM NA. Circling Rwy 7 NA at night. For inop ALS, increase S-LOC 25 Cat A/B visibility to 1 SM and Cat C/D visibility to 1 1/2 SM.

ATIS <b>132.275</b>	ATLANTA APP CON <b>126.975 239.275</b>	GWINNETT TOWER ★ <b>124.1 (CTAF) 0</b>	GND CON <b>121.8</b>	UNICOM <b>123.05</b>
------------------------	---	---	-------------------------	-------------------------



ELEV 1062	TDZE 1039
-----------	-----------



CATEGORY	A	B	C	D
S-ILS 25		1393-3/4	354 (400-3/4)	
S-LOC 25	1500-3/4	461 (500-3/4)	1500-1	461 (500-1)
CIRCLING	1640-1	578 (600-1)	1780-2 718 (800-2)	1780-2 1/4 718 (800-2 1/4)

HIRL Rwy 7-25

FAF to MAP 5.1 NM

Knots	60	90	120	150	180
Min:Sec	5:06	3:24	2:33	2:02	1:42

SE-4, 11 JUN 2026 to 09 JUL 2026

SE-4, 11 JUN 2026 to 09 JUL 2026