

LOC I-GLR 111.1	APP CRS 096°	Rwy Ldg 6579 TDZE 1321 Apt Elev 1328
---------------------------	------------------------	--

ILS or LOC RWY 9

GAYLORD RGNL (G.L.R.)

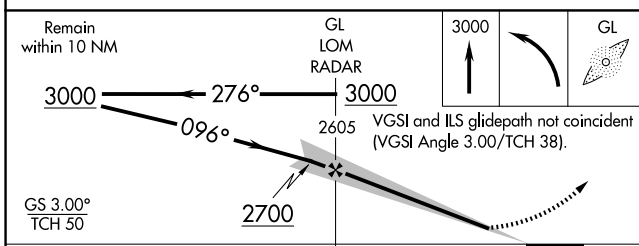
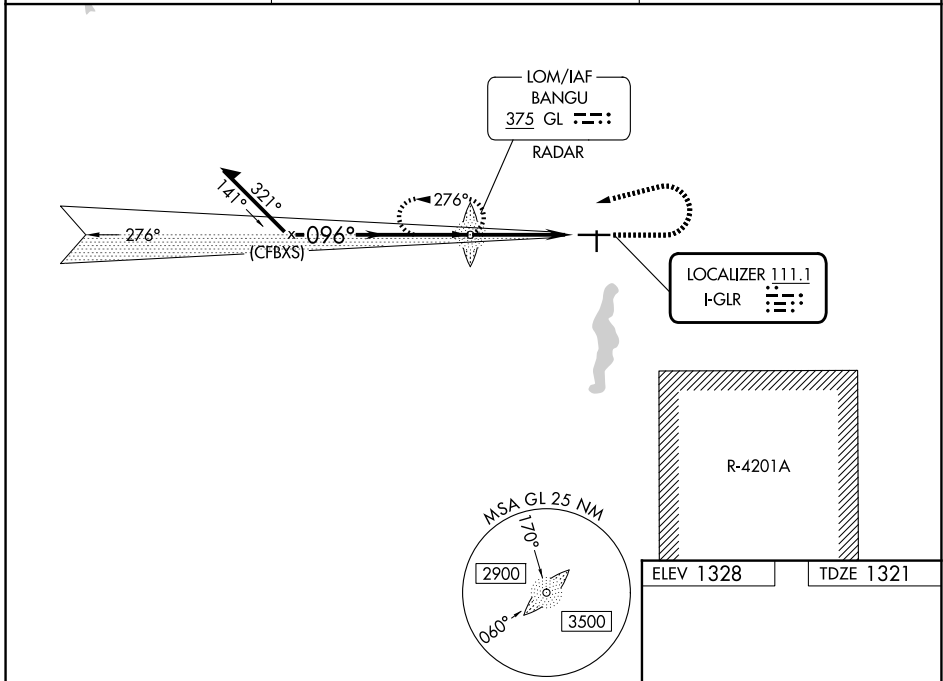
ADF required. RADAR required for procedure entry.

▽ Circling Rwy 18, 36 NA at night. When local altimeter setting not received, use GOV altimeter setting and increase S-ILS 9 DA to 1591 feet; increase all MDAs 80 feet and S-LOC 9 visibility Cat C and D $\frac{3}{8}$ SM, and Circling visibility Cat C and D $\frac{1}{4}$ SM. For inop ALS when using GOV altimeter setting, increase S-ILS 9 all Cats visibility to $\frac{7}{8}$ SM and S-LOC 9 Cats C and D visibility to $1\frac{3}{4}$ SM. For inop ALS, increase S-LOC 9 Cats C and D visibility $\frac{3}{8}$ SM.

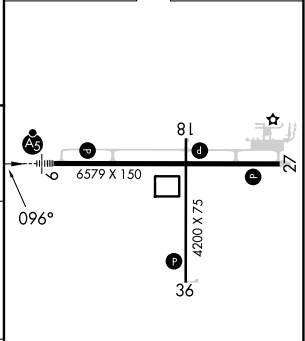
MALSR

MISSED APPROACH: Climb to 3000 then left turn direct BANGU LOM and hold.

ASOS 118.375	MINNEAPOLIS CENTER 134.6 354.05	UNICOM 122.8 (CTAF) 0
------------------------	---	---------------------------------



ELEV 1328	TDZE 1321
-----------	-----------



CATEGORY	A	B	C	D
S-ILS 9		1521- $\frac{1}{2}$	200 (200- $\frac{1}{2}$)	
S-LOC 9	1860- $\frac{1}{2}$	539 (600- $\frac{1}{2}$)	1860-1	539 (600-1)
CIRCLING	1860-1 532 (600-1)	1940-1 612 (700-1)	2040-2 712 (800-2)	2040-2 $\frac{1}{4}$ 712 (800-2 $\frac{1}{4}$)

HIRL Rwy 9-27

MIRL Rwy 18-36

REIL Rws 18, 27 and 36

FAF to MAP 3.9 NM

Knots	60	90	120	150	180
Min:Sec	3:54	2:36	1:57	1:34	1:18

EC-1, 11 JUN 2026 to 09 JUL 2026

EC-1, 11 JUN 2026 to 09 JUL 2026