


LOC/DME I-BFT 109.75 Chan 34 (Y)	APP CRS 245°	Rwy Ldg TDZE Apt Elev	24R 6003 583 584	24L 5197 584 584
--	------------------------	-----------------------------	--	--

ILS or LOC RWY 24R

BURKE LAKEFRONT (BKL)

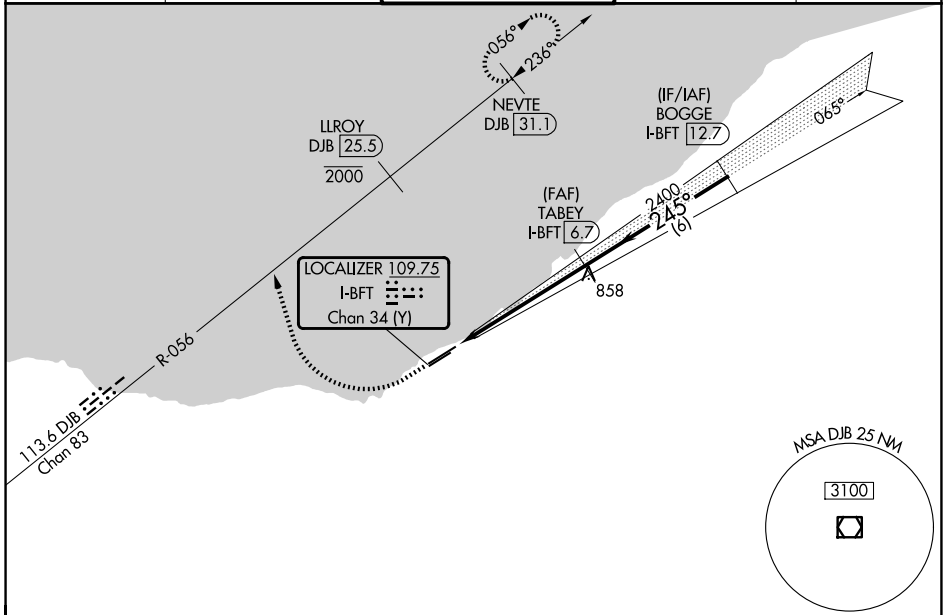
DME required. RADAR required for procedure entry.

▼ Circling Rwy 6R NA at night. Rwy 24R helicopter visibility reduction below 3/4 SM NA. Circling NA southeast of Rwy 6R-24L. S-ILS minimums NA when control tower closed.

MALSF 

MISSED APPROACH: Climb to 1120 then climbing right turn heading 350° and DJB VOR/DME R-056 to cross LLROY/DJB 25.5 DME at or below 2000 then climb to 3000 on DJB VOR/DME R-056 northeast course to NEVTE/DJB 31.1 DME and hold.

ATIS 125.25	CLEVELAND APP CON 125.35 346.325	LAKEFRONT TOWER ★ 124.3 (CTAF) 0 339.8	GND CON 121.9 339.8	UNICOM 122.95 0
-----------------------	--	--	-------------------------------	---------------------------



EC-2, 11 JUN 2026 to 09 JUL 2026

EC-2, 11 JUN 2026 to 09 JUL 2026

