


LOC/DME I-HDR 111.5 Chan 52	APP CRS 316°	Rwy Ldg 4798 TDZE 922 Apt Elev 934
---	------------------------	---

ILS or LOC RWY 31

BARROW COUNTY (WDR)

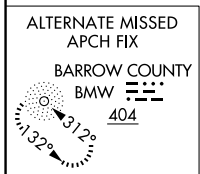
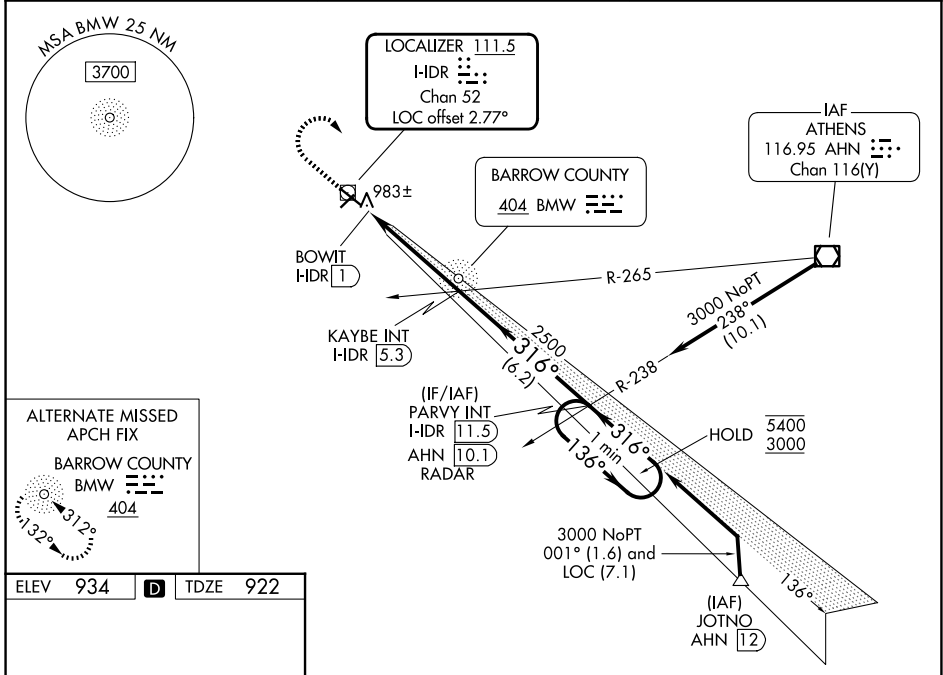
DME or RADAR required for procedure entry.

⚠ Rwy 31 helicopter visibility reduction below $\frac{3}{4}$ SM NA. Inop table does not apply to S-ILS 31. For inop ALS, increase S-LOC 31 all Cats visibility to 1 SM. Circling Rwy 13, 23 NA at night.

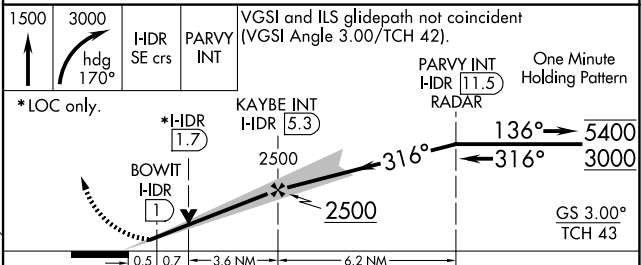
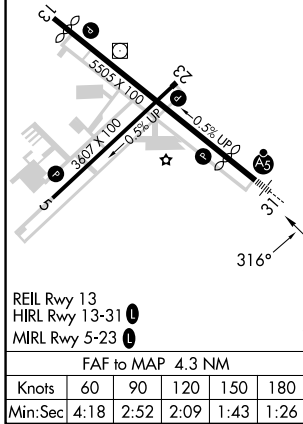
MALSR 

MISSED APPROACH: Climb to 1500 then climbing right turn to 3000 via heading 170° and HDR SE course to PARVY INT/I-HDR 11.5 DME/RADAR and hold.

AWOS-3 118.575	ATLANTA APP CON ★ 132.475 291.1	UNICOM 123.0 (CTAF) 0
--------------------------	---	---------------------------------



ELEV 934	D	TDZE 922
-----------------	----------	-----------------



CATEGORY	A	B	C	D
S-ILS 31		1172- $\frac{3}{4}$	250 (300- $\frac{3}{4}$)	
S-LOC 31		1300- $\frac{3}{4}$	378 (400- $\frac{3}{4}$)	
CIRCLING	1400-1 466 (500-1)	1580-1 646 (700-1)	1660-2 726 (800-2)	1660-2 $\frac{1}{4}$ 726 (800-2 $\frac{1}{4}$)

SE-4, 11 JUN 2026 to 09 JUL 2026

SE-4, 11 JUN 2026 to 09 JUL 2026