

WAAS CH 93604 W07A	APP CRS 065°	Rwy Ldg TDZE Apt Elev	5000 990 993
--	------------------------	-----------------------------	---

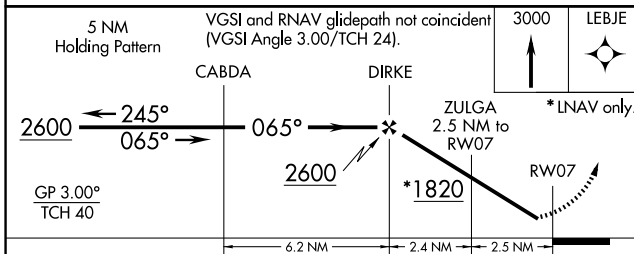
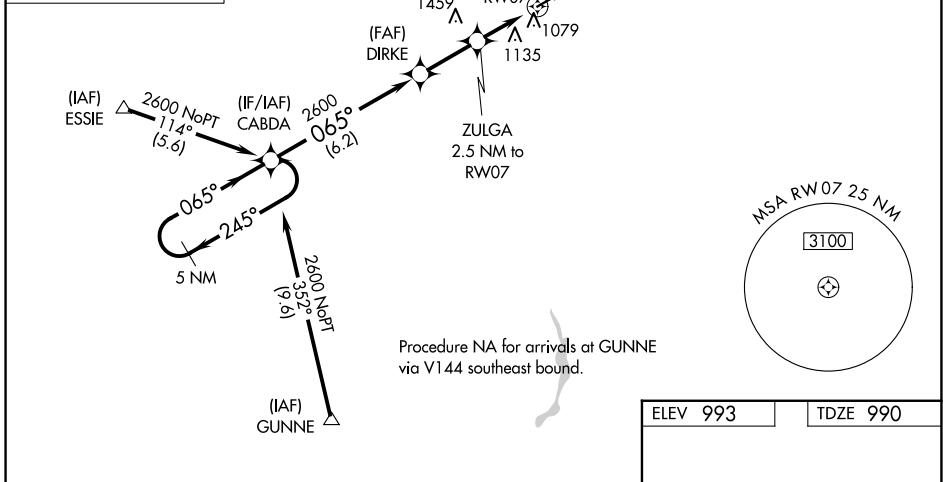
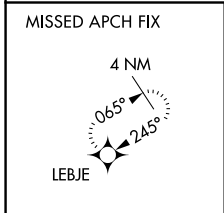
RNAV (GPS) RWY 7

MARION MUNI (MNN)

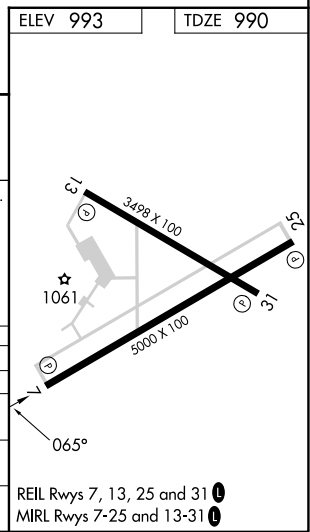
⚠ When local altimeter setting not received, use Ohio State University altimeter setting and increase LPV DA to 1327 feet, increase LNAV/VNAV DA to 1574 feet; increase all MDAs 100 feet and visibility Cat C/D ¼ SM. Baro-VNAV NA when using Ohio State University altimeter setting. For uncompensated Baro-VNAV systems, LNAV/VNAV NA below -16°C (4°F) or above 46°C (114°F). Visibility reduction by helicopters NA. DME/DME RNP-0.3 NA.

MISSED APPROACH:
Climb to 3000 direct
LEBJE and hold.

ASOS 119.975	CLEVELAND APP CON * 128.35 360.65	CLNC DEL 126.8	UNICOM 122.8 (CTAF) 0
------------------------	---	--------------------------	---------------------------------



CATEGORY	A	B	C	D
LPV DA	1240-1 250 (300-1)			
LNAV/VNAV DA	1379-1½ 389 (400-1½)			
LNAV MDA	1440-1 450 (500-1)	1440-1¼ 450 (500-1¼)	1440-1½ 450 (500-1½)	1440-1¾ 450 (500-1¾)
CIRCLING	1480-1 487 (500-1)	1500-1 507 (600-1)	1700-2 707 (800-2)	1820-2¾ 827 (900-2¾)



EC-2, 11 JUN 2026 to 09 JUL 2026

EC-2, 11 JUN 2026 to 09 JUL 2026