

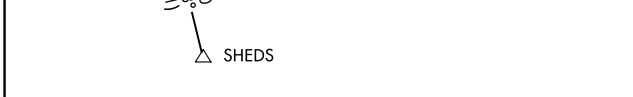
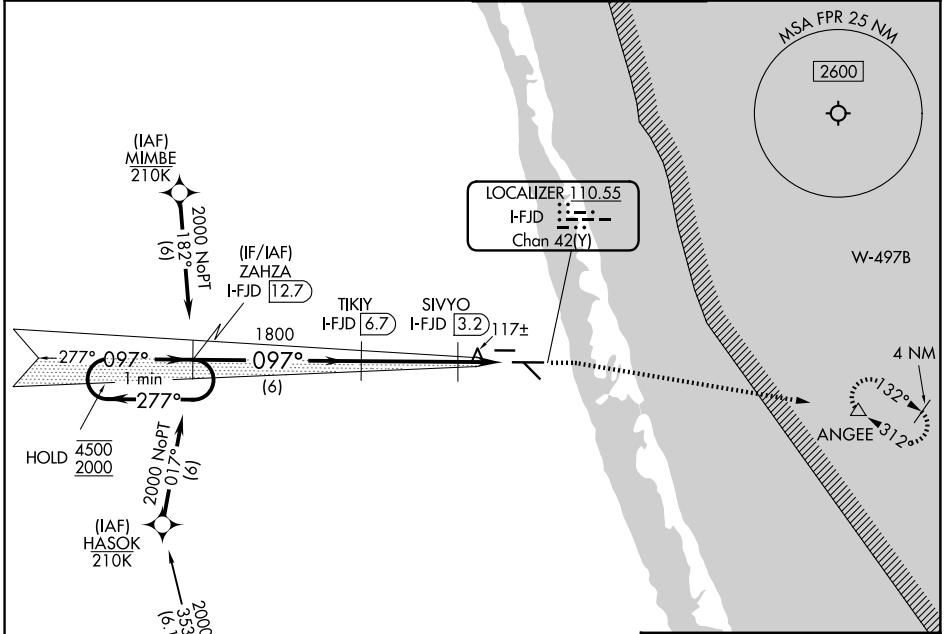
LOC/DME I-FJD 110.55 Chan 42(Y)	APP CRS 097°	Rwy Ldg TDZE 23 Apt Elev 23
---	------------------------	---

ILS or LOC RWY 10R

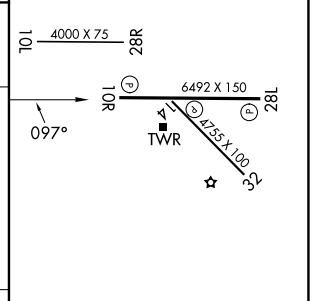
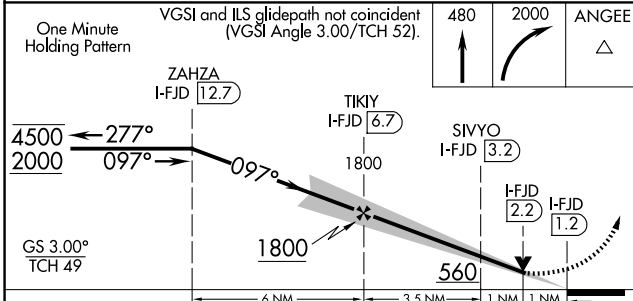
TREASURE COAST INTL (FPR)

RNP APCH - GPS. DME required.	MISSED APPROACH: Climb to 480 then climbing right turn to 2000 direct ANGEЕ and hold.
Autopilot coupled approach NA below 720 MSL. Circling Rwy 10L/28R NA at night.	

ATIS 134.825	PALM BEACH APP CON 132.8	FORT PIERCE TOWER ★ 128.2 (CTAF) 0	GND CON (GCO) 119.55
------------------------	------------------------------------	--	--------------------------------



ELEV 23	D	TDZE 23
---------	---	---------



CATEGORY	A	B	C	D
S-ILS 10R		273-3/4	250 (300-3/4)	
S-LOC 10R		380-1	357 (400-1)	
CIRCLING	460-1 437 (500-1)	480-1 457 (500-1)	880-2 1/2 857 (900-2 1/2)	880-2 3/4 857 (900-2 3/4)

REIL Rwy 10R and 28L 0
MRL all Rwy 0

SE-3, 11 JUN 2026 to 09 JUL 2026

SE-3, 11 JUN 2026 to 09 JUL 2026