

| | | |
|--|------------------------|---|
| WAAS CH 40104 W16A | APP CRS 169° | Rwy Ldg 4797 TDZE 1319 Apt Elev 1319 |
|--|------------------------|---|

RNAV (GPS) RWY 16

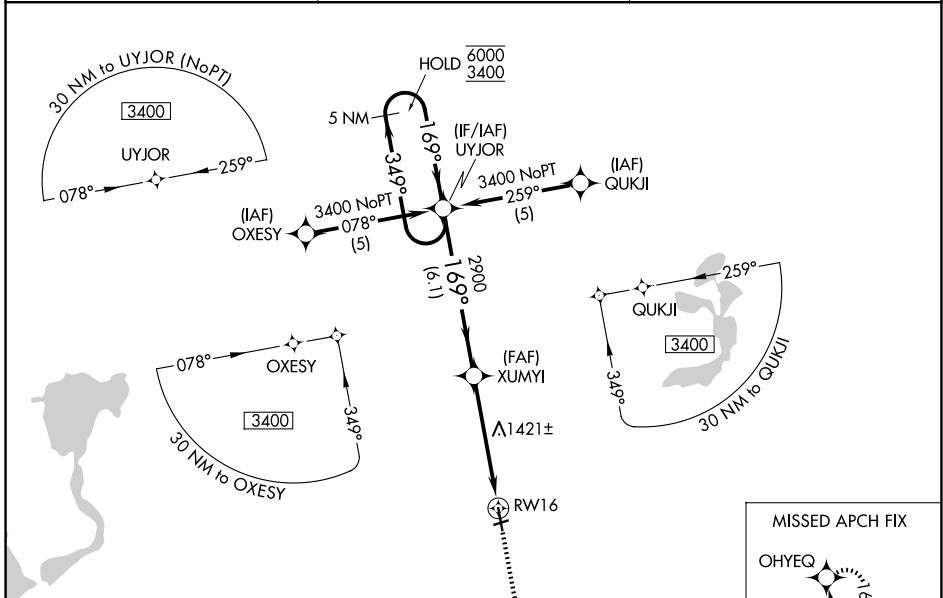
ESTHERVILLE MUNI (EST)

RNP APCH.

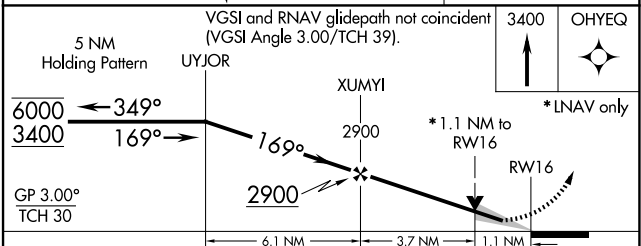
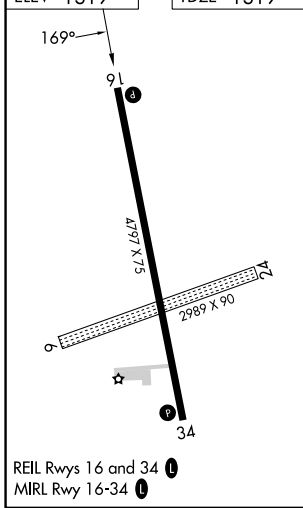
⚠ Circling NA to Rwy 6 and 24. Baro-VNAV and VDP NA when using Jackson altimeter setting. For uncompensated Baro-VNAV systems, LNAV/VNAV NA below -17°C or above 54°C. When local altimeter setting not received, use Jackson altimeter setting and increase all DA/MDA 60 feet.

MISSED APPROACH: Climb to 3400 direct OHYEQ and hold.

| | | |
|------------------------|---|-----------------------------------|
| ASOS 121.425 | MINNEAPOLIS CENTER 127.75 257.7 | UNICOM 122.975 (CTAF) 0 |
|------------------------|---|-----------------------------------|



| | |
|-----------|-----------|
| ELEV 1319 | TDZE 1319 |
|-----------|-----------|



| CATEGORY | A | B | C | D |
|--------------|-----------------------|-----------------------|---|----|
| LPV DA | 1569-1 | 250 (300-1) | | NA |
| LNAV/VNAV DA | 1608-1 | 289 (300-1) | | NA |
| LNAV MDA | 1720-1 | 401 (500-1) | | NA |
| CIRCLING | 1720-1 401 (500-1) | 1840-1 521 (600-1) | | NA |

NC-3, 11 JUN 2026 to 09 JUL 2026

NC-3, 11 JUN 2026 to 09 JUL 2026