

WAAS CH 99724 W06A	APP CRS 059°	Rwy Idg TDZE 670 Apt Elev 670	2598
--	------------------------	---	-------------

RNAV (GPS) RWY 6

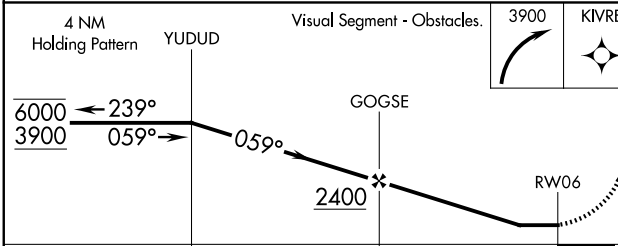
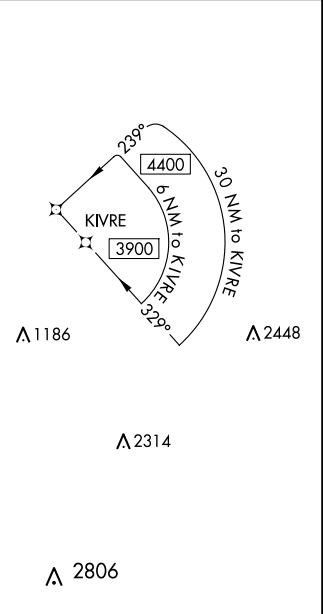
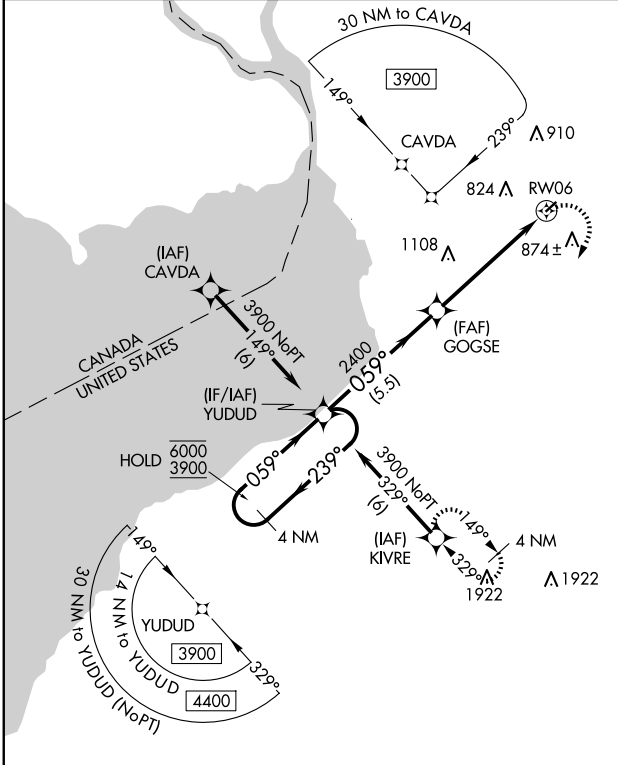
BUFFALO AIRFIELD (9G~~0~~)

RNP APCH.

Procedure NA at night. Rwy 6 helicopter visibility reduction below 1 SM NA.
Use Buffalo Niagara Intl altimeter setting.

MISSED APPROACH: Climbing right turn to 3900 direct KIVRE and hold, continue climb in hold to 3900.

BUFFALO APP CON 126.15 263.125	UNICOM 122.975 (CTAF) 0
--	-----------------------------------



ELEV 670	TDZE 670
REIL Rwy 6 and 24 0	
MIRL Rwy 6-24 0	

CATEGORY	A	B	C	D
LP MDA	1180-1	510 (600-1)	NA	
LNAV MDA	1180-1	510 (600-1)	NA	

NE-2, 11 JUN 2026 to 09 JUL 2026

NE-2, 11 JUN 2026 to 09 JUL 2026