

APP CRS	Rwy Ldg	4700
095°	TDZE	740
	Apt Elev	747

RNAV (GPS) RWY 9

DOWAGIAC MUNI (C91)

RNP APCH - GPS

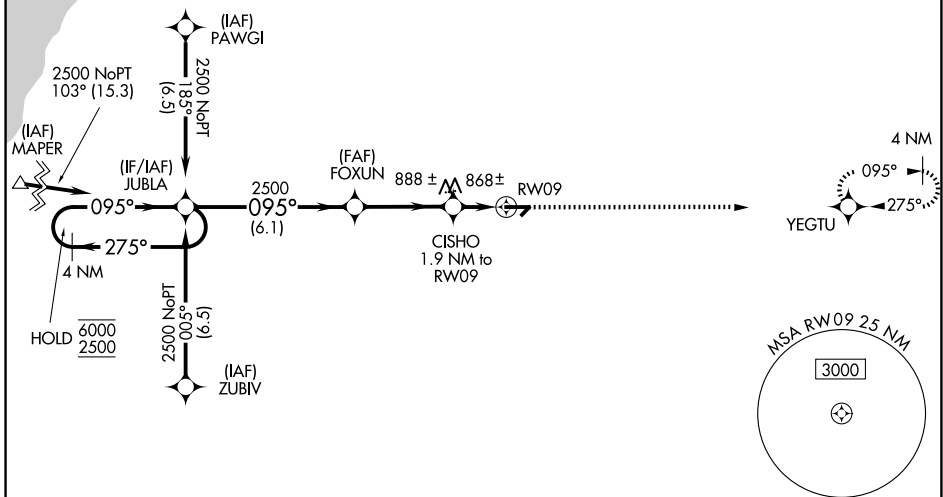
▽ Rwy 9 helicopter visibility reduction below 1 SM NA. Circling NA to Rws 4 and 22.
 Obtain local altimeter setting on CTAF, when not received, use EKM altimeter setting and increase all MDAs 60 feet, and LNAV visibility Cats C and D ¼ SM, and Circling visibility Cats C and D ½ SM. Straight-in and Circling Rwy 9 NA at night.

MISSED APPROACH: Climb to 2700 direct YEGTU and hold.

SOUTH BEND APP CON *
118.55 257.8

UNICOM
122.8 (CTAF) 0

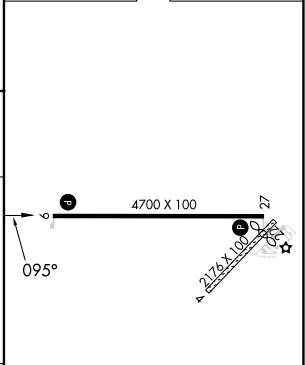
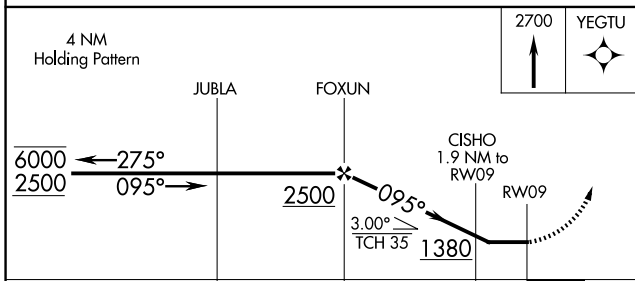
Procedure NA for arrivals at MAPER on V526 northwest bound.



EC-1, 11 JUN 2026 to 09 JUL 2026

EC-1, 11 JUN 2026 to 09 JUL 2026

ELEV 747	TDZE 740
----------	----------



CATEGORY	A	B	C	D
LNAV MDA	1120-1		380 (400-1)	
CIRCLING	1300-1 553 (600-1)	1320-1 573 (600-1)	1320-1½ 573 (600-1½)	1480-2¼ 733 (800-2¼)

REIL Rws 9 and 27 0
 MIRL Rwy 9-27 0