

LOC/DME I-CCR <b>108.5</b> Chan 22	APP CRS <b>185°</b>	Rwy Ldg <b>4400</b> TDZE <b>22</b> Apt Elev <b>26</b>
--	------------------------	---


# LDA RWY 19R

BUCHANAN FLD (CCR)

**DME required.**

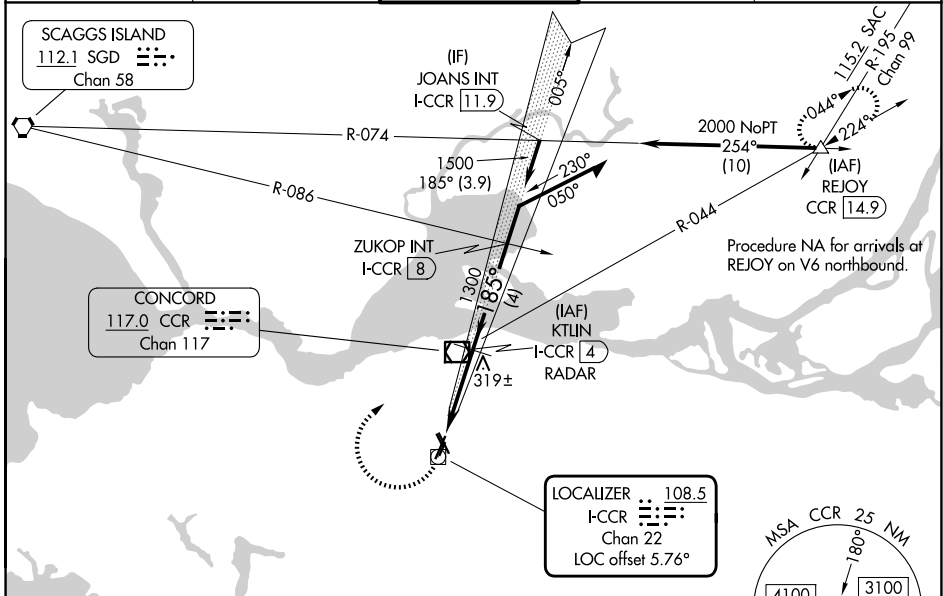
▼ Circling NA west of Rwy 1L-19R. Circling Rwy 1L, 1R, 19L, 32L, 32R

▲ NA at night. Rwy 19R helicopter visibility reduction below 3/4 SM NA.  
For inop ALS, increase S-19R Cats C/D visibility to 2 SM.  
\*For inop ALS, increase S-19R Cats C/D visibility to 1 1/2 SM.

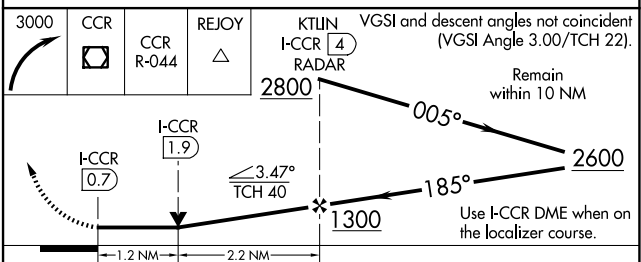
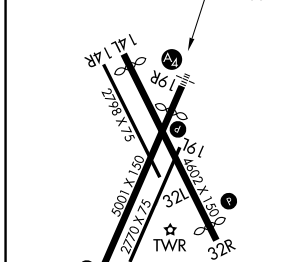
**MALS** 

**MISSED APPROACH:** Climbing right turn to 3000 direct CCR VOR/DME then on CCR VOR/DME R-044 to REJOY/CCR 14.9 DME and hold.  
\*Missed approach requires minimum climb of 282 feet per NM to 1800.

ATIS <b>124.7</b>	TRAVIS APP CON <b>119.9 322.325</b>	CONCORD TOWER* <b>119.7 (CTAF) 257.8</b>	GND CON <b>121.9</b>	UNICOM <b>122.95</b>
----------------------	--	---	-------------------------	-------------------------



ELEV 26	<b>D</b>	TDZE 22
HIRL Rwy 1L-19R REIL Rwy 1L and 32R MIRL Rwy 14L-32R		



CATEGORY	A	B	C	D
S-19R*	440-3/4 418 (500-3/4)		440-1 418 (500-1)	
S-19R	780-3/4 758 (800-3/4)	780-1 758 (800-1)	780-1 7/8 758 (800-1 7/8)	
CIRCLING	780-1 754 (800-1)	780-1 1/4 754 (800-1 1/4)	960-2 3/4 934 (1000-2 3/4)	1300-3 1274 (1300-3)

FAF to MAP 3.4 NM

Knots	60	90	120	150	180
Min:Sec	3:24	2:16	1:42	1:22	1:08

SW-2, 11 JUN 2026 to 09 JUL 2026

SW-2, 11 JUN 2026 to 09 JUL 2026