

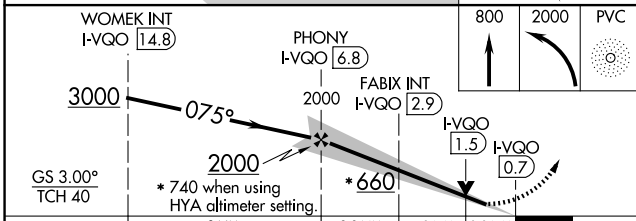
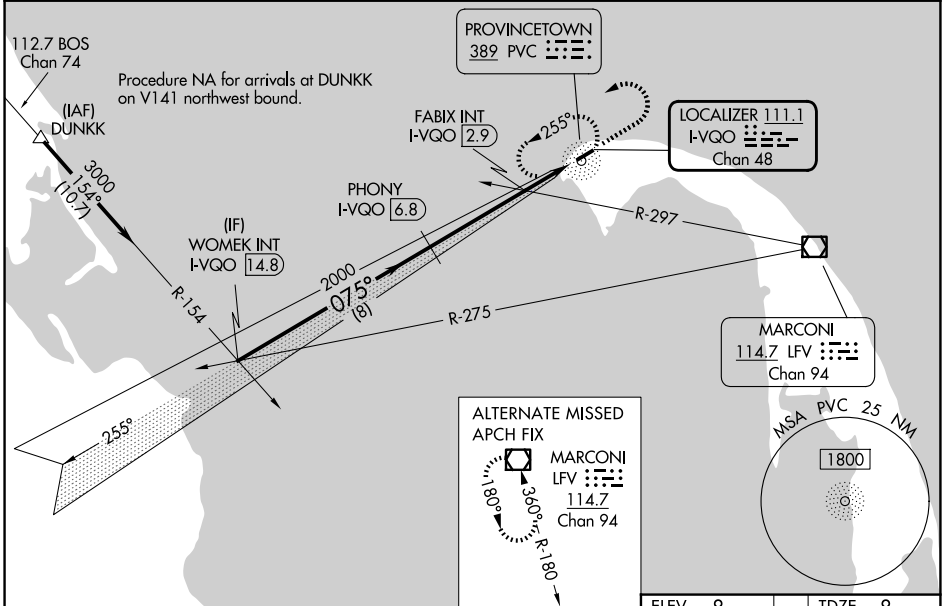
LOC/DME I-VQO 111.1 Chan 48	APP CRS 075°	Rwy Ldg 3502 TDZE 8 Apt Elev 8
---	------------------------	---

ILS or LOC RWY 7

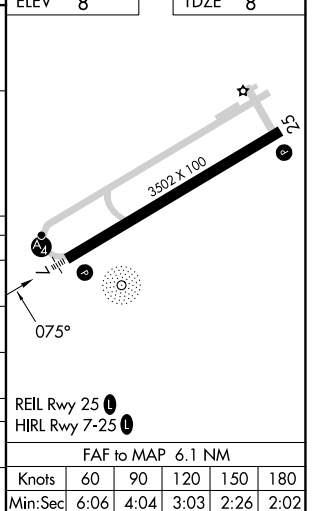
PROVINCETOWN MUNI (PVC)

ADF required. DME required for LOC only.	MALSF	MISSED APPROACH: Climb to 800 then climbing left turn to 2000 direct PVC NDB and hold, continue climb-in-hold to 2000.
Circling Rwy 25 NA at night. VDP NA when using HYA altimeter setting. Inop table does not apply to S-ILS 7. For inop ALS when using HYA altimeter setting, increase S-ILS 7 all Cats visibility to 3/8 SM. When local altimeter setting not received, use HYA altimeter setting and increase all S-ILS 7 to 271 feet and all MDA 80 feet.		

AWOS-3PT 119.275	BOSTON APP CON 118.2	CLNC DEL 120.65	UNICOM 122.8 (CTAF)	122.85
----------------------------	--------------------------------	---------------------------	-------------------------------	---------------



CATEGORY	A	B	C	D
S-ILS 7	208-3/4	200 (200-3/4)		NA
S-LOC 7	660-3/4	652 (700-3/4)		NA
CIRCLING	660-1	652 (700-1)		NA
FABIX FIX MINIMUMS (DUAL VOR RECEIVERS OR DME REQUIRED)				
S-LOC 7	320-3/4	312 (400-3/4)		NA
CIRCLING	460-1 452 (500-1)	660-1 652 (700-1)		NA



NE-1, 11 JUN 2026 to 09 JUL 2026

NE-1, 11 JUN 2026 to 09 JUL 2026