

LOC I-SPW <b>110.9</b>	APP CRS <b>121°</b>	Rwy Ldg TDZE Apt Elev	<b>6001</b> <b>1339</b> <b>1339</b>
---------------------------	------------------------	-----------------------------	---

# ILS or LOC RWY 12

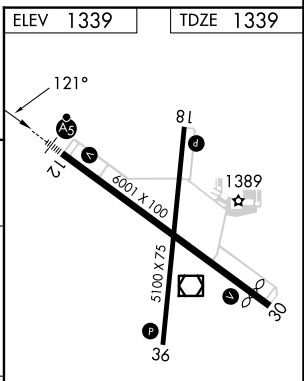
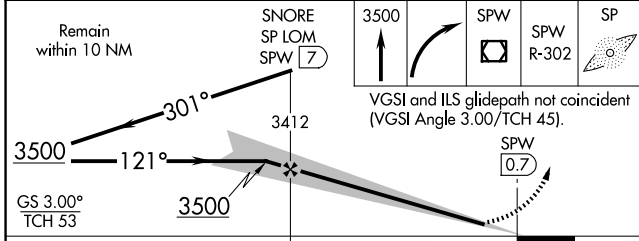
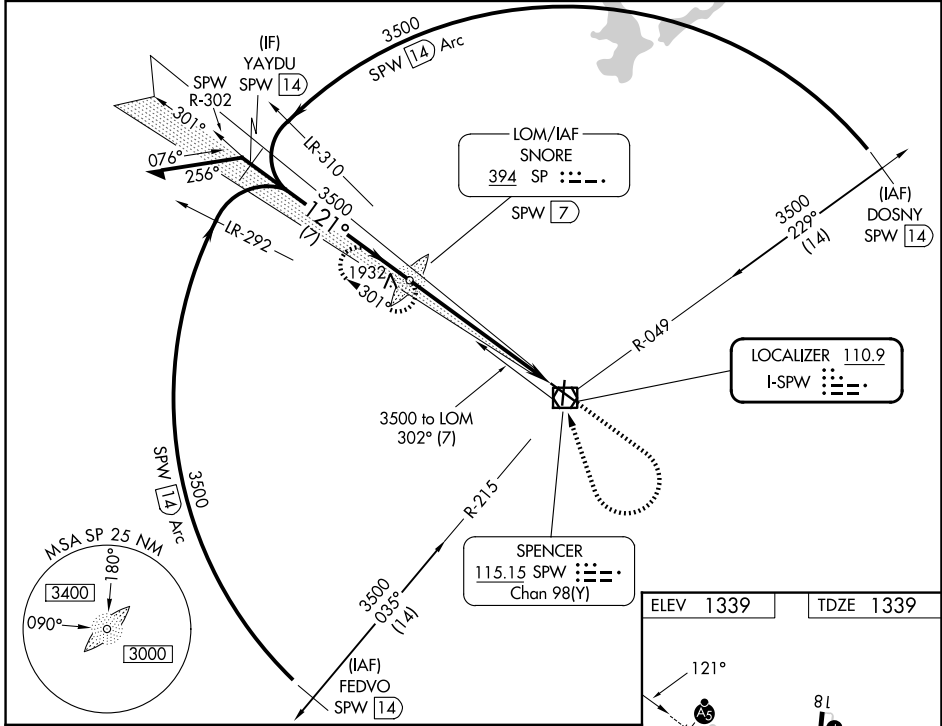
SPENCER MUNI (SPW)

ADF or DME required.

**NA** For inop ALS, increase S-LOC 12 Cats C and D visibility to 1 1/2 SM. When local altimeter setting not received, use Estherville altimeter setting and increase S-ILS 12 DA to 1599 feet; increase all MDAs 60 feet and S-LOC 12 visibility Cat C/D 1/2 SM, and Circling visibility Cat C/D 1/4 SM. For inop ALS, when using Estherville altimeter setting, increase S-LOC 12 Cats C and D visibility to 1 1/2 SM.

**MALSR** MISSED APPROACH: Climb to 3500 then right turn direct SPW VOR/DME then on SPW VOR/DME R-302 to SNORE LOM/SPW VOR/DME 7 DME and hold.

ASOS <b>126.625</b>	MINNEAPOLIS CENTER <b>127.75 257.7</b>	UNICOM <b>123.0</b> (CTAF) <b>0</b>
------------------------	---	--



CATEGORY	A	B	C	D
S-ILS 12		1539-1/2	200 (200-1/2)	
S-LOC 12	1900-1/2	561 (600-1/2)	1900-1 1/4	561 (600-1 1/4)
CIRCLING	1900-1	561 (600-1)	2100-2 1/4	2100-2 1/2
			761 (800-2 1/4)	761 (800-2 1/2)

ELEV 1339	TDZE 1339
REIL Rwy 18, 30 and 36 <b>0</b>	
MIRL Rwy 12-30 and 18-36 <b>0</b>	
FAF to MAP 6.3 NM	
Knots	60 90 120 150 180
Min:Sec	6:18 4:12 3:09 2:31 2:06

NC-3, 11 JUN 2026 to 09 JUL 2026

NC-3, 11 JUN 2026 to 09 JUL 2026